

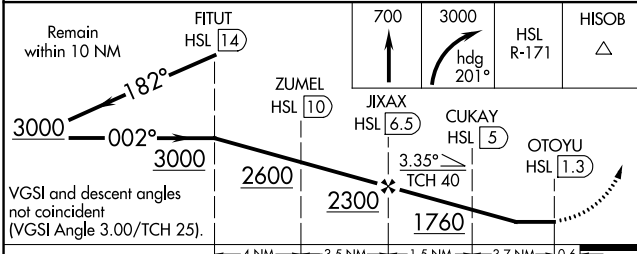
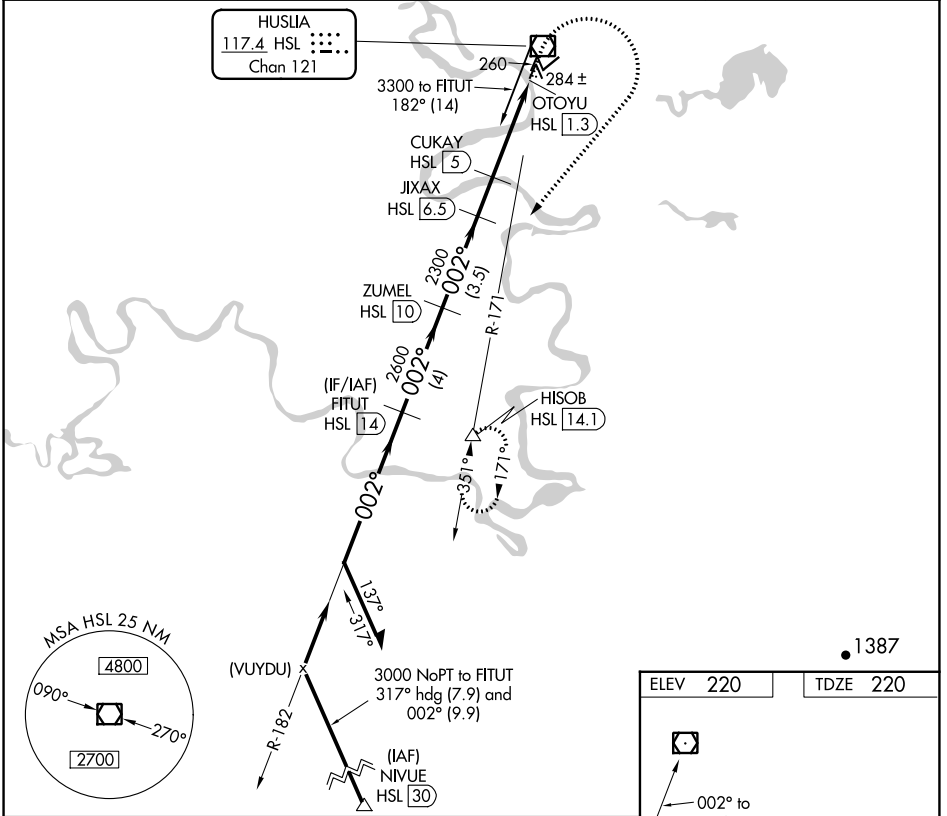
VOR/DME HSL <b>117.4</b> Chan 121	APP CRS <b>002°</b>	Rwy Idg TDZE Apt Elev <b>4000</b> <b>220</b> <b>220</b>
---	------------------------	--

# VOR/DME RWY 3

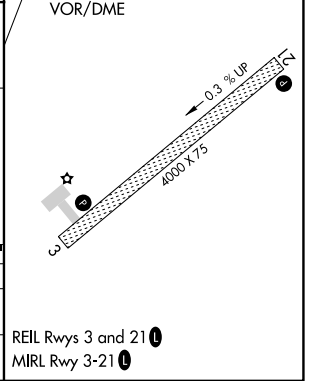
HUSLIA (HLA) (PAHL)

**▼** Helicopter visibility reduction below 3/4 SM NA. MISSED APPROACH: Climb to 700 then climbing right turn to 3000 on heading 201° and HSL R-171 to HISOB/14.1 DME and hold.

AWOS-3P <b>135.75</b>	ANCHORAGE CENTER <b>127.0 290.2</b>	FAIRBANKS RADIO <b>122.4</b>	UNICOM <b>122.8 (CTAF) 0</b>
--------------------------	--	---------------------------------	---------------------------------



CATEGORY	A	B	C	D
S-3	540-1 320 (400-1)			
CIRCLING	600-1 380 (400-1)	680-1 460 (500-1)	680-1½ 460 (500-1½)	780-2 560 (600-2)



AK, 26 DEC 2024 to 20 FEB 2025

AK, 26 DEC 2024 to 20 FEB 2025