

# RNAV (GPS) RWY 23

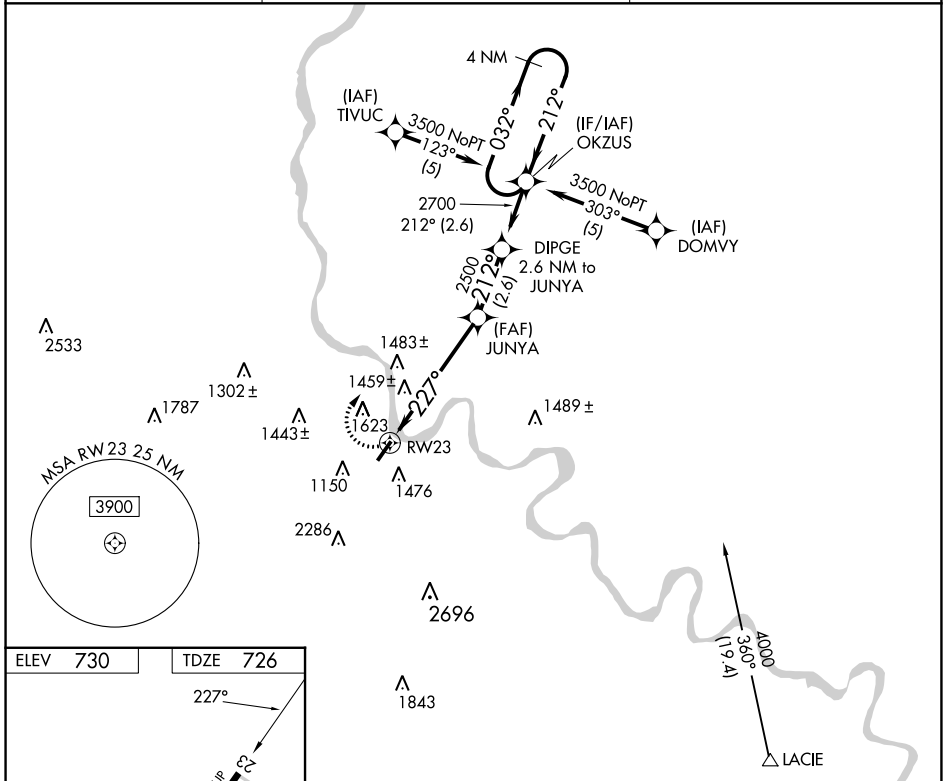
BRADFORD COUNTY (N27)

APP CRS <b>227°</b>	Rwy Idg TDZE Apt Elev	<b>4301</b> <b>726</b> <b>730</b>
------------------------	-----------------------------	---

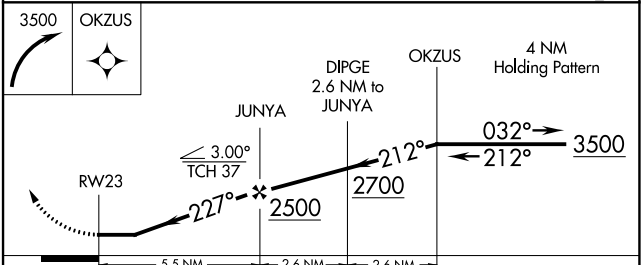
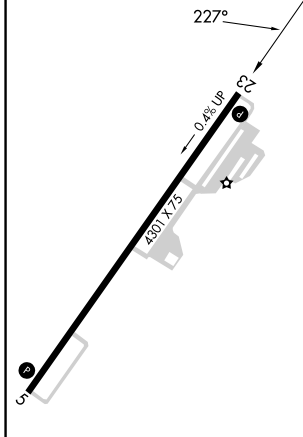
**NA** When local altimeter setting not received, use Elmira altimeter setting and increase all MDAs 40 feet. GPS or RNP-0.3 required. DME/DME RNP-0.3 NA. Night landing: RWY 5 NA. Helicopter visibility reduction below 3/4 SM NA.

**MISSED APPROACH:**  
Climbing right turn to 3500 direct OKZUS WP and hold.

AWOS-3 <b>119.925</b>	BINGHAMTON APP CON ★ <b>118.6 257.625</b>	UNICOM <b>123.0 (CTAF)</b>
--------------------------	--	-------------------------------



ELEV 730	TDZE 726
----------	----------



CATEGORY	A	B	C	D
LNAV MDA	1800-1¼ 1074 (1100-1¼)	1800-1½ 1074 (1100-1½)	NA	
<b>CIRCLING</b>	2020-1¼ 1290 (1300-1¼)	2020-1½ 1290 (1300-1½)	NA	

NE-4, 26 DEC 2024 to 23 JAN 2025

NE-4, 26 DEC 2024 to 23 JAN 2025