

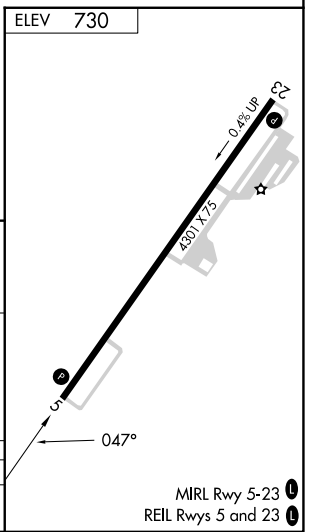
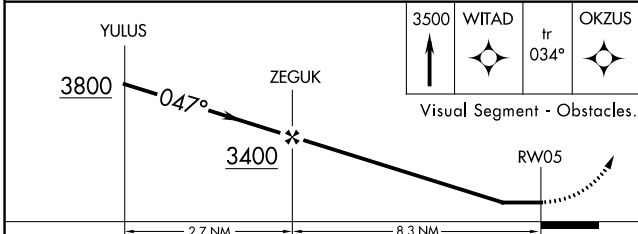
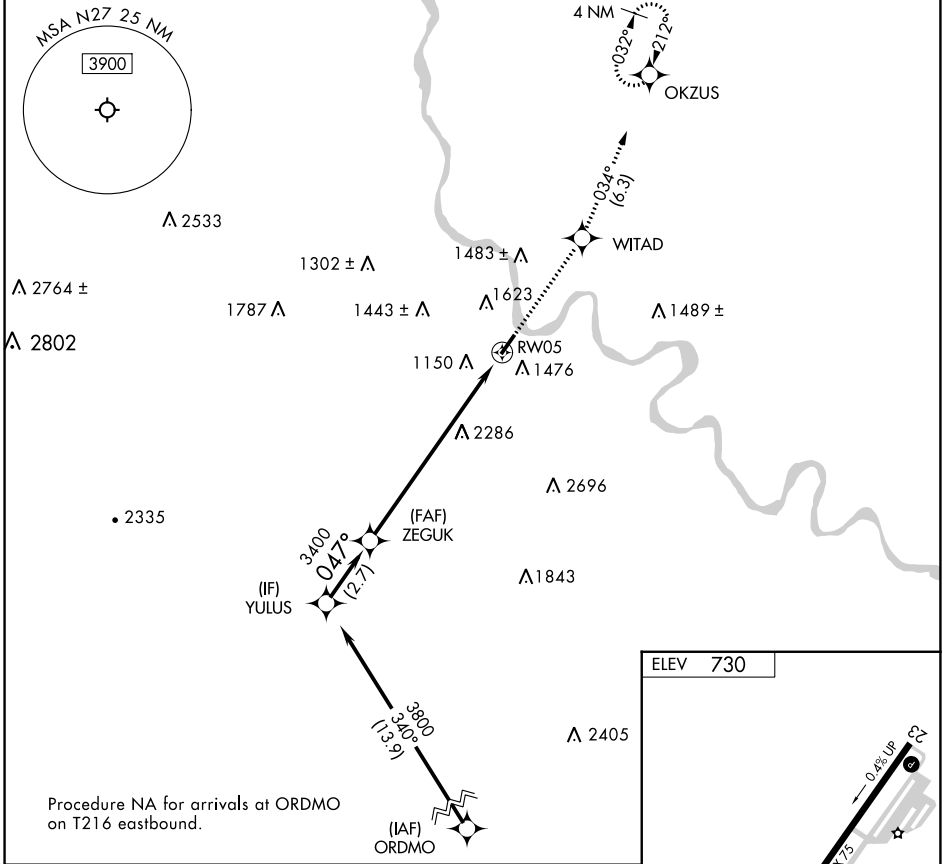
APP CRS	Rwy Idg	N/A
047°	TDZE	N/A
	Apt Elev	730

RNAV (GPS)-A

BRADFORD COUNTY (N27)

RNP APCH - GPS.		MISSED APPROACH: Climb to 3500 direct WITAD and on track 034° to OKZUS and hold.
▼	When local altimeter setting not received, use Elmira altimeter setting and increase all MDAs	
▲ NA	120 feet. Rwy 5 helicopter visibility reduction below 1 SM NA. Procedure NA at night.	

AWOS-3 119.925	BINGHAMTON APP CON ★ 118.6 257.625	UNICOM 123.0 (CTAF) ①
--------------------------	--	---------------------------------



CATEGORY	A	B	C	D
① CIRCLING	2680-1¼ 1950 (2000-1¼)	2680-1½ 1950 (2000-1½)		NA

NE-4, 26 DEC 2024 to 23 JAN 2025

NE-4, 26 DEC 2024 to 23 JAN 2025