

WAAS CH <b>78217</b> <b>W31A</b>	APP CRS <b>307°</b>	Rwy Idg TDZE Apt Elev	<b>3700</b> <b>1675</b> <b>1680</b>
--	------------------------	-----------------------------	---

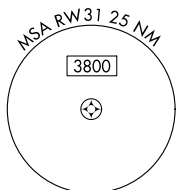
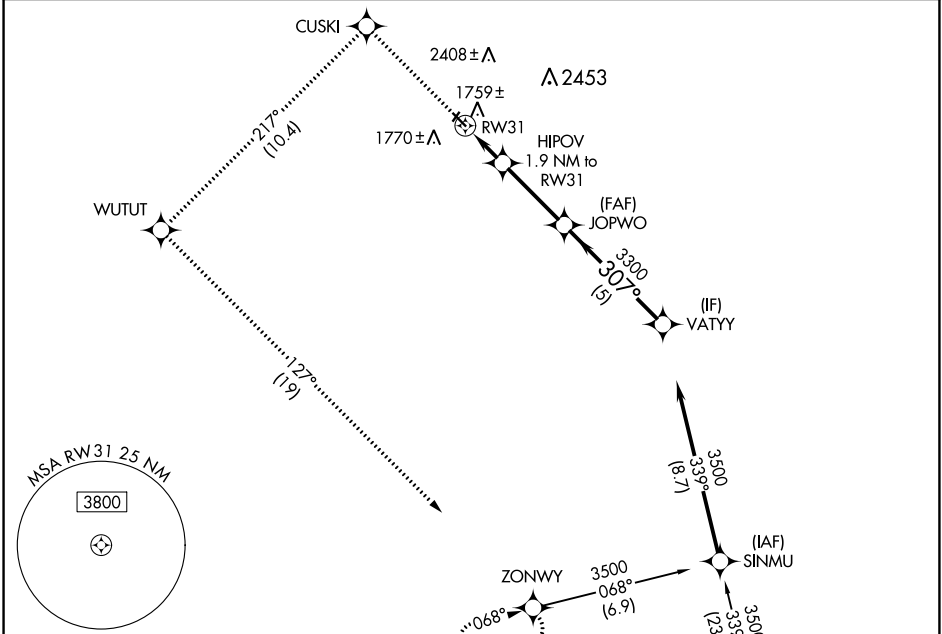
# RNAV (GPS) RWY 31

BOTTINEAU MUNI (D09)

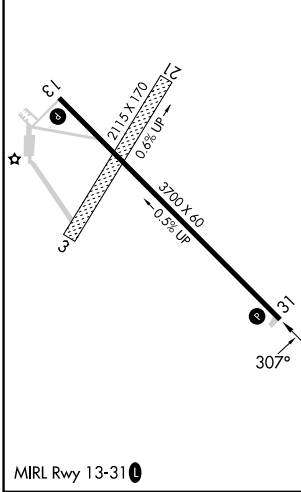
RNP APCH - GPS.  
 ⚠ Circling NA to Rwys 3 and 21. For uncompensated Baro-VNAV systems, LNAV/VNAV NA below -18°C or above 54°C.

MISSED APPROACH: Climb to 3900 direct CUSKI and left turn on track 217° to WUTUT and left turn on track 127° to ZONWY and hold.

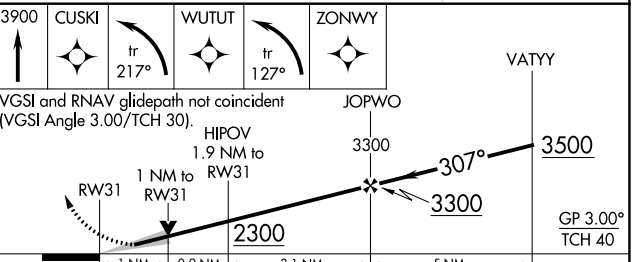
AWOS-3PT <b>118.25</b>	MINOT APP CON* <b>119.6 363.8</b>	UNICOM <b>122.8 (CTAF) 0</b>
---------------------------	--------------------------------------	---------------------------------



ELEV 1680	TDZE 1675
-----------	-----------



Procedure NA for arrivals at BALTA on T331 eastbound.



CATEGORY	A	B	C	D
LPV DA	1875-1	200 (200-1)		NA
LNAV/VNAV DA	1925-1	250 (300-1)		NA
LNAV MDA	2020-1	345 (400-1)		NA
CIRCLING	2200-1 520 (600-1)	2380-1 700 (700-1)		NA

NC-1, 26 DEC 2024 to 23 JAN 2025

NC-1, 26 DEC 2024 to 23 JAN 2025