

APP CRS	Rwy Idg	4041
013°	TDZE	273
	Apt Elev	273

RNAV (GPS) RWY 2

TICONDEROGA MUNI (4B6)

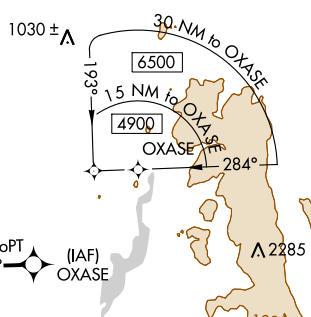
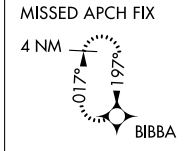
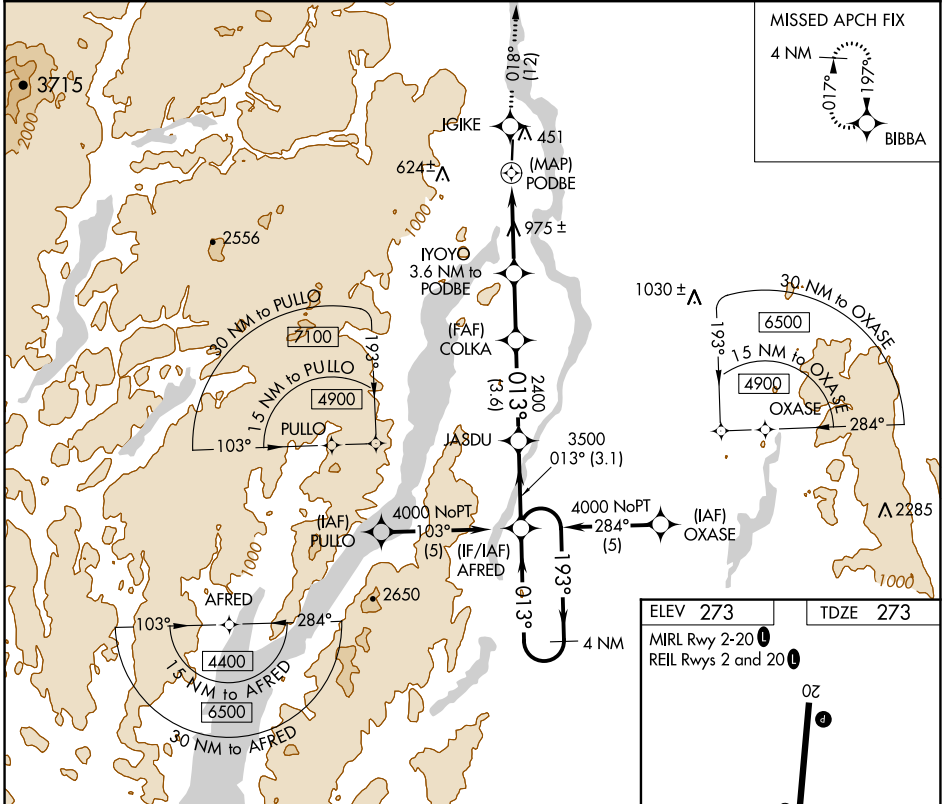
RNP APCH.

NA Use Burlington altimeter setting. Procedure NA at night.
Rwy 2 helicopter visibility reduction below 1 SM NA.

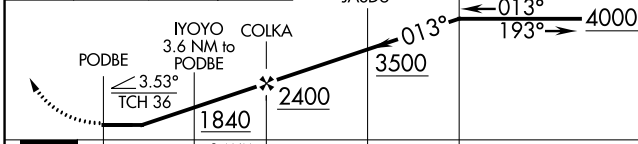
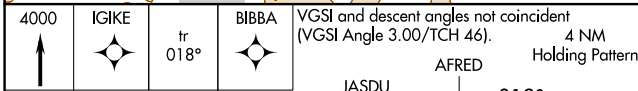
MISSED APPROACH: Climb to 4000 direct IGIKE and on track 018° to BIBBA and hold.

BOSTON CENTER
135.7 282.2

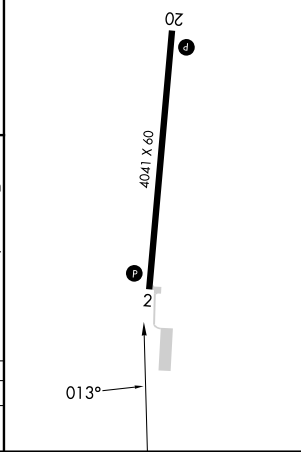
UNICOM
122.8 (CTAF)



ELEV 273	TDZE 273
MIRL Rwy 2-20	
REIL Rws 2 and 20	



CATEGORY	A	B	C	D
LNAV MDA	1520-1¼ 1247 (1300-1¼)	1520-1½ 1247 (1300-1½)	NA	



NE-2, 26 DEC 2024 to 23 JAN 2025

NE-2, 26 DEC 2024 to 23 JAN 2025