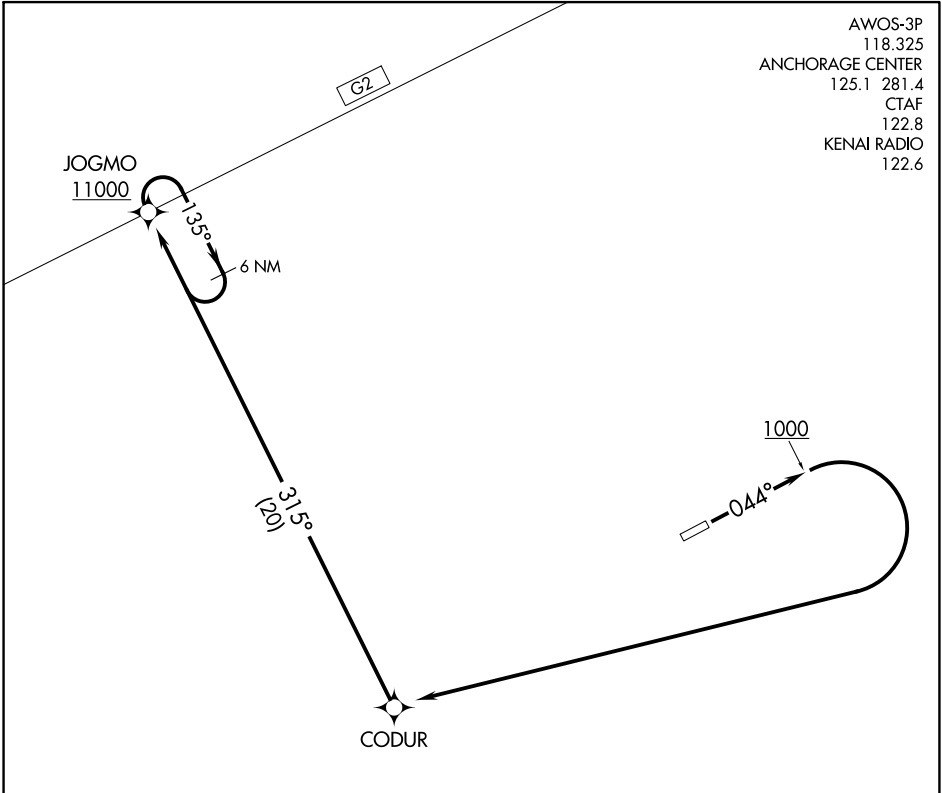


(JOGMO1.JOGMO) 18256

# JOGMO ONE DEPARTURE (OBSTACLE) (RNAV)

AKHIOK (AKK) (PAKH)  
AL-9288 (FAA) AKHIOK, ALASKA

AWOS-3P  
118.325  
ANCHORAGE CENTER  
125.1 281.4  
CTAF  
122.8  
KENAI RADIO  
122.6



AK, 26 DEC 2024 to 20 FEB 2025

AK, 26 DEC 2024 to 20 FEB 2025

NOTE: GPS required.  
NOTE: RNAV 1

### TAKEOFF MINIMUMS

Rwy 4: Standard with a minimum (obstacle) climb of 450' per NM to 2200, or 2200-3 for climb in visual conditions. Climb in visual conditions NA at night.  
Rwy 22: NA, obstacles.

NOTE: Chart not to scale.

### DEPARTURE ROUTE DESCRIPTION

TAKEOFF RUNWAY 4: Climb via 044° heading to 1000, then via right turn direct CODUR WP, then right turn via 315° track to JOGMO WP, Thence . . . .

Or climb in visual conditions to cross Akhiok Airport at or above 2200 southwest bound direct CODUR WP, then right turn via 315° track to JOGMO WP, Thence . . . .

. . . . Climb in holding, (if required) to cross JOGMO WP at or above 11000 before proceeding via assigned route.

# JOGMO ONE DEPARTURE (OBSTACLE) (RNAV)

(JOGMO1.JOGMO) 10MAY07

AKHIOK, ALASKA  
AKHIOK (AKK) (PAKH)