

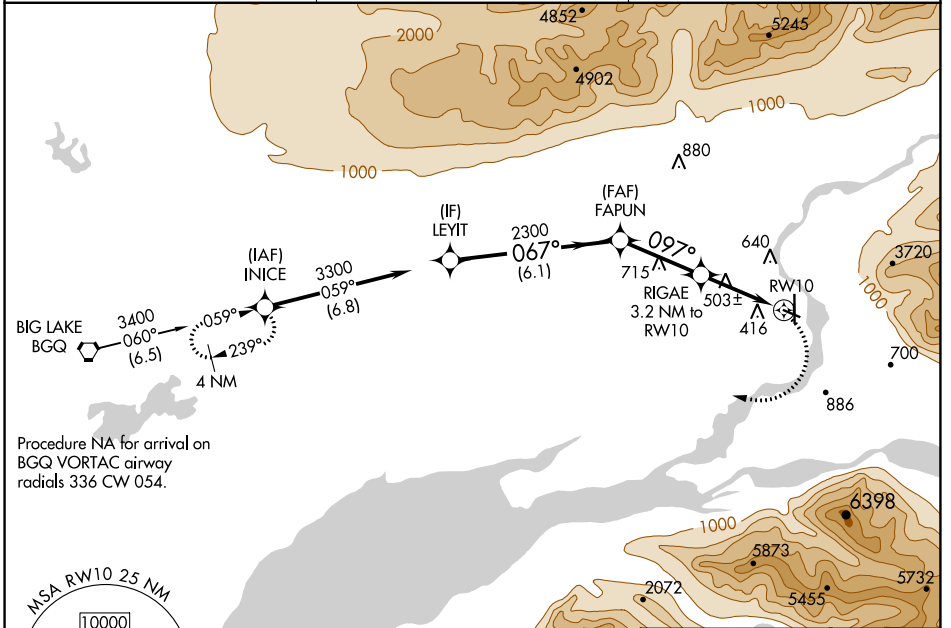
WAAS CH <b>40425</b> <b>W10A</b>	APP CRS <b>097°</b>	Rwy Idg TDZE Apt Elev	<b>3616</b> <b>233</b> <b>249</b>
--	------------------------	-----------------------------	---

# RNAV (GPS) RWY 10

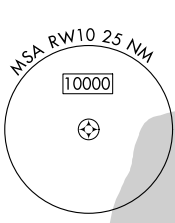
WARREN "BUD" WOODS PALMER MUNI (PAQ) (PAAQ)

RNP APCH.	MISSED APPROACH: (Do not exceed 185K until INICE) Climbing right turn to 3600 direct INICE and hold.
<p>▼ Circling NA northeast of Rwy 16-28. Procedure NA at night.</p> <p>▲ Rwy 10 helicopter visibility reduction below 1 SM NA.</p>	

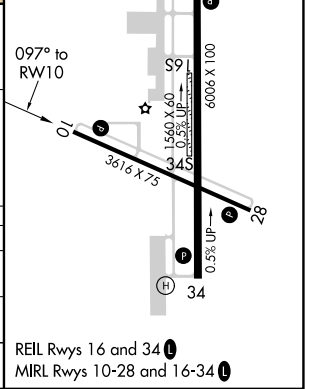
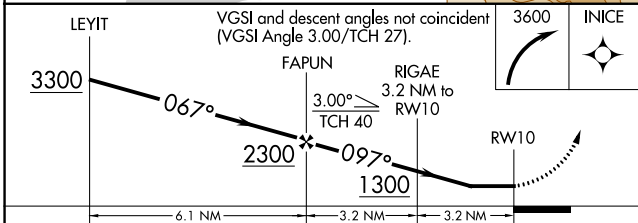
AFIS <b>134.75</b>	ANCHORAGE APP CON <b>118.6 290.5</b>	PALMER RADIO <b>123.6 (CTAF) 0 122.4</b>
-----------------------	---	---



Procedure NA for arrival on BGQ VORTAC airway radials 336 CW 054.



ELEV 249	TDZE 233
----------	----------



CATEGORY	A	B	C	D
LP MDA	760-1	527 (600-1)	760-1½	527 (600-1½)
LNVA MDA	820-1	587 (600-1)	820-1⅝	587 (600-1⅝)
CIRCLING	860-1 611 (700-1)	940-1 691 (700-1)	1300-3	1051 (1100-3)

REIL Rwy 16 and 34  
MIRL Rwy 10-28 and 16-34

AK, 26 DEC 2024 to 20 FEB 2025

AK, 26 DEC 2024 to 20 FEB 2025