

WAAS CH <b>53636</b> <b>W04A</b>	APP CRS <b>038°</b>	Rwy Idg TDZE Apt Elev	<b>3700</b> <b>352</b> <b>354</b>
--	------------------------	-----------------------------	---

# RNAV (GPS) RWY 4

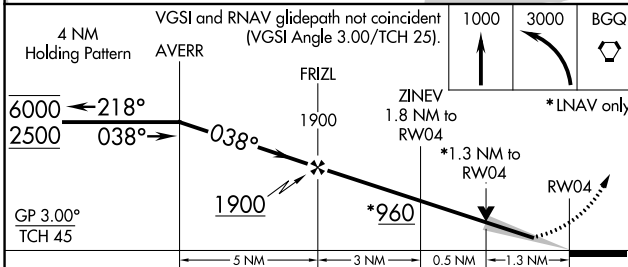
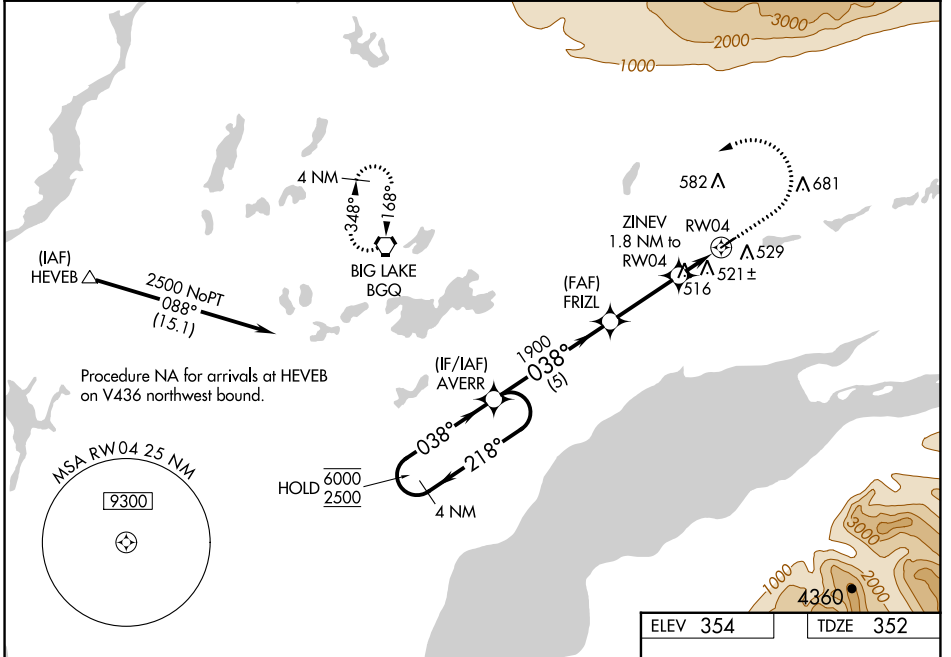
WASILLA (IYS) (PAWS)

RNP APCH.

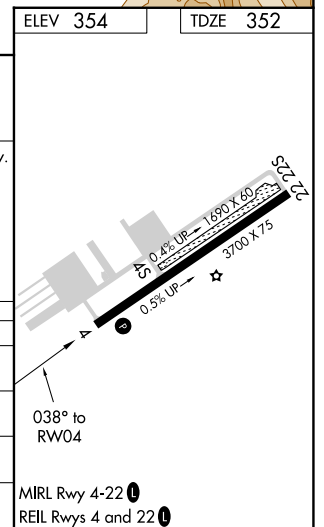
**⚠** Circling NA to Rwy 4S and 22S. Baro-VNAV and VDP NA when using Palmer altimeter setting. For uncompensated Baro-VNAV systems, LNAV/VNAV NA below -20°C or above 54°C. When local altimeter setting not received, use Palmer altimeter setting and increase all DA 46 feet, all MDA 60 feet and all visibilities ¼ mile.

MISSED APPROACH: Climb to 1000 then climbing left turn to 3000 direct BGQ VORTAC and hold.

AWOS-3P <b>135.25</b>	ANCHORAGE APP CON <b>119.1 363.2</b>	CTAF <b>122.8</b>
--------------------------	---	----------------------



CATEGORY	A	B	C	D
LPV DA	602-3/4	250 (300-3/4)		NA
LNAV/VNAV DA	828-1 5/8	476 (500-1 1/8)		NA
LNAV MDA	780-1	428 (500-1)		NA
<b>C</b> CIRCLING	1000-1	646 (700-1)		NA



AK, 26 DEC 2024 to 20 FEB 2025

AK, 26 DEC 2024 to 20 FEB 2025