

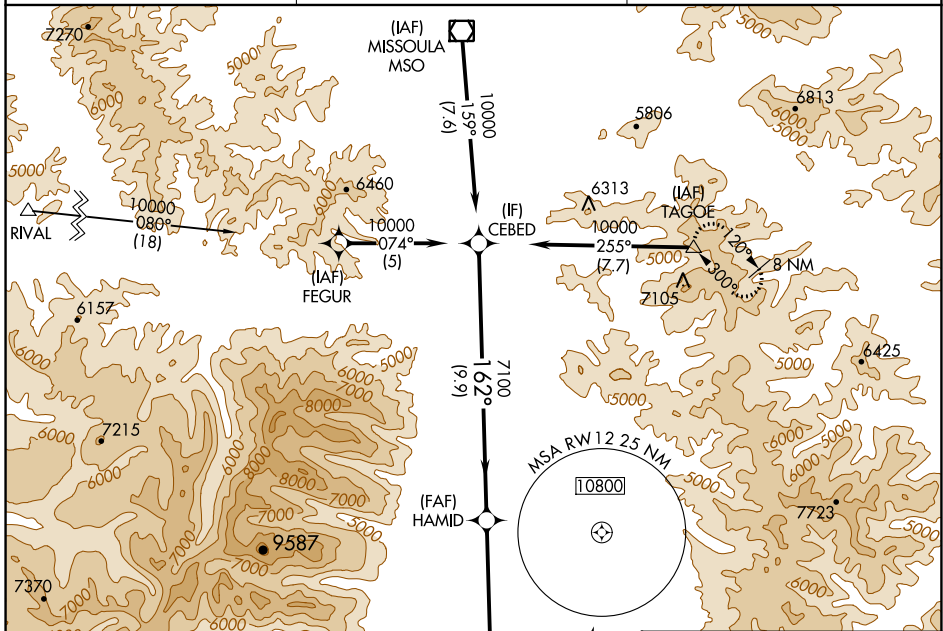
APP CRS 162°	Rwy Idg TDZE Apt Elev	N/A N/A 3614
------------------------	-----------------------------	---

RNAV (GPS)-A

STEVENSVILLE (32S)

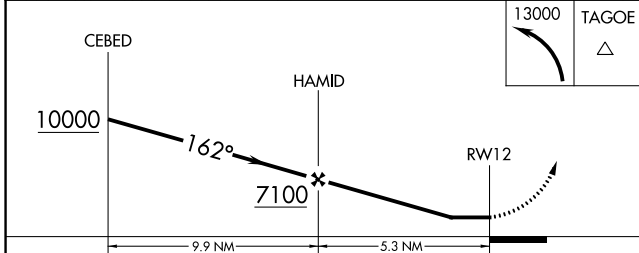
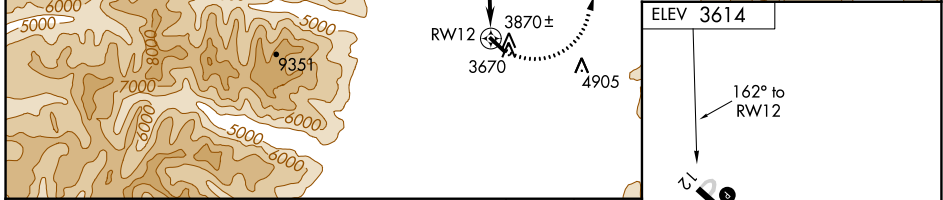
RNP APCH.	MISSED APPROACH: Climbing left turn to 13000 direct TAGOE and hold, continue climb-in-hold to 13000.
NA Procedure NA at night.	

AWOS-AV 120.925	SPOKANE APP CON* 124.9 298.95	UNICOM 122.8 (CTAF) 0
---------------------------	---	---------------------------------



NW-1, 26 DEC 2024 to 23 JAN 2025

NW-1, 26 DEC 2024 to 23 JAN 2025



CATEGORY	A	B	C	D
CIRCLING	6400-1¼ 2786 (2800-1¼)	6400-1½ 2786 (2800-1½)	NA	

ELEV 3614

162° to RW12

2.0% UP

3000 X 75

MRL Rwy 12-30 0