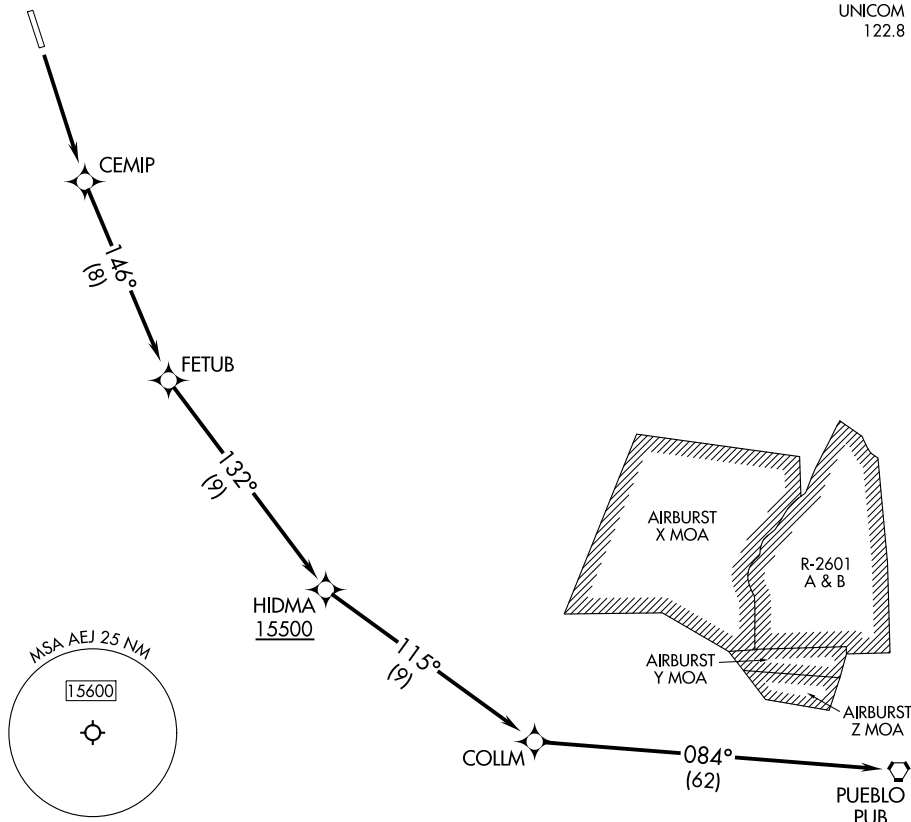


PUEBLO TWO DEPARTURE (OBSTACLE) (RNAV)

RNAV 1 - GPS.

DENVER CENTER
119.85 363.15
UNICOM
122.8



SW-1, 26 DEC 2024 to 23 JAN 2025

SW-1, 26 DEC 2024 to 23 JAN 2025

TAKEOFF MINIMUMS

Rwy 15: Standard with minimum climb of 400'/NM to 8200, then 340'/NM to 15500.

Rwy 33: NA - Terrain.

TAKEOFF OBSTACLE NOTES

Rwy 15: Electrical system 8' from DER, 27' left of centerline, 1' AGL/7905' MSL.

Fence 68' from DER, 473' right of centerline, 9' AGL/7910' MSL.

Vehicles on road beginning 85' from DER, 505' right of centerline, up to 7917' MSL.

NOTE: Chart not to scale.

DEPARTURE ROUTE DESCRIPTION

TAKEOFF RUNWAY 15: Climb direct CEMIP, then on track 146° to FETUB, then on track 132° to cross HIDMA at or above 15500, then on depicted route to PUB VORTAC.