

VOR/DME MVE <b>111.6</b> Chan <b>53</b>	APP CRS <b>328°</b>	Rwy Idg <b>3715</b> TDZE <b>1045</b> Apt Elev <b>1048</b>
---	------------------------	---

# VOR/DME RWY 33

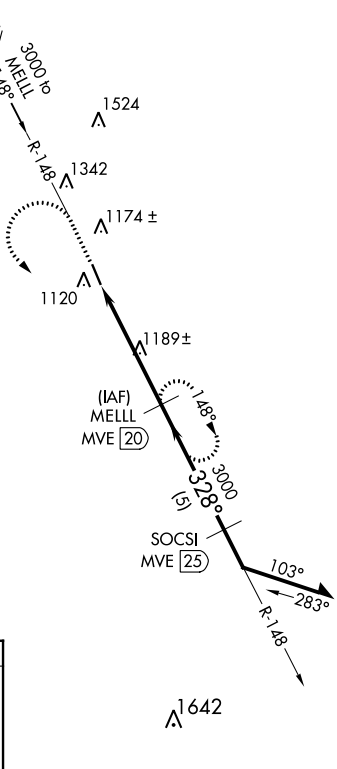
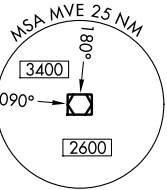
GRANITE FALLS MUNI/LENZEN-ROE-FAGEN MEML FLD (G'DB)

**⚠** When local altimeter setting not received, use Montevideo altimeter setting and increase all MDAs 40 feet, increase S-33 visibility Cat C ½ SM. Rwy 33 helicopter visibility below ¾ SM NA.

MISSED APPROACH: Climb to 3000, then left turn via R-148 to MELL/MVE 20 DME and hold.

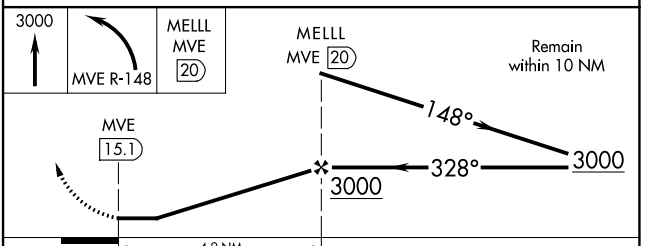
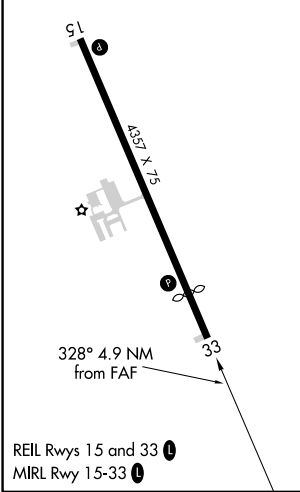
AWOS-3 <b>120.1</b>	MINNEAPOLIS CENTER <b>127.1 290.2</b>	GCO <b>121.725</b>	UNICOM <b>122.8 (CTAF)</b>
------------------------	--	-----------------------	-------------------------------

MONTEVIDEO  
111.6 MVE  
Chan 53



IAF  
REDWOOD FALLS  
113.3 RWF  
Chan 80

ELEV 1048	TDZE 1045
-----------	-----------



CATEGORY	A	B	C	D
S-33	1480-1	435 (500-1)	1480-1¼ 435 (500-1¼)	1480-1½ 435 (500-1½)
CIRCLING	1540-1 492 (500-1)	1580-1 532 (600-1)	1580-1½ 532 (600-1½)	1700-2 652 (700-2)

# VOR/DME RWY 33

NC-1, 26 DEC 2024 to 23 JAN 2025

NC-1, 26 DEC 2024 to 23 JAN 2025