

WAAS CH <b>48937</b> <b>W31A</b>	APP CRS <b>304°</b>	Rwy Idg TDZE Apt Elev	<b>3300</b> <b>992</b> <b>993</b>
--	------------------------	-----------------------------	---

# RNAV (GPS) RWY 31

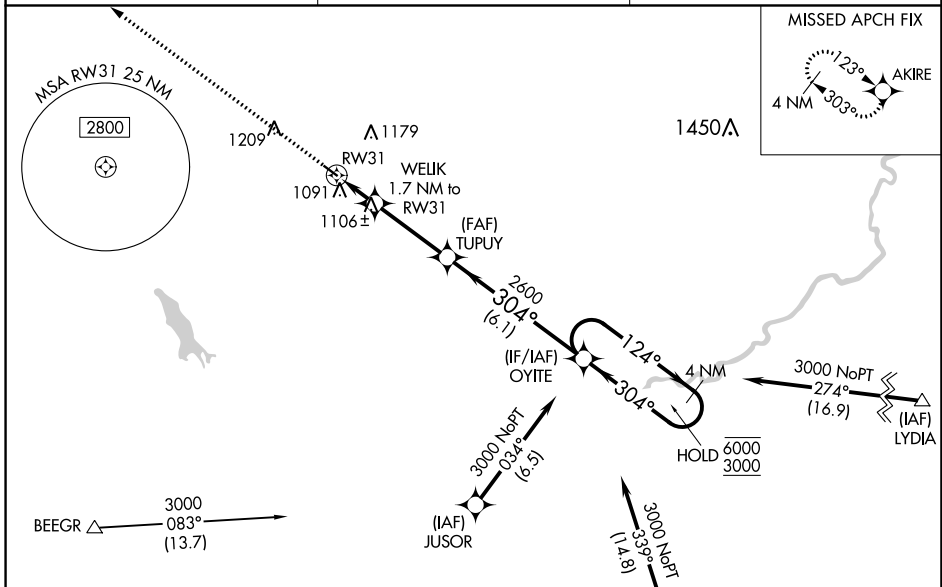
GLENCOE MUNI (GYL)

RNP APCH - GPS.

**⚠** For uncompensated Baro-VNAV systems, LNAV/VNAV NA below -16°C or above 54°C. Baro-VNAV and VDP NA when using Hutchinson altimeter setting. When local altimeter setting not received, use Hutchinson altimeter setting: increase LPV DA to 1285 feet; increase LNAV/VNAV DA to 1296 feet; increase all MDAs 60 feet.

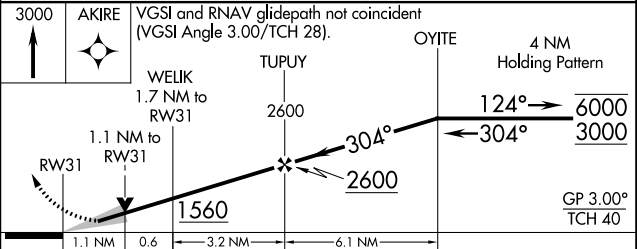
MISSED APPROACH: Climb to 3000 direct AKIRE and hold.

AWOS-3 <b>119.625</b>	MINNEAPOLIS APP CON <b>134.7 284.7</b>	UNICOM <b>122.8 (CTAF)</b>
--------------------------	---	-------------------------------



ELEV 993	TDZE 992
----------	----------

Procedure NA for arrivals at ZANNA on T400 southwest bound.



	A	B	C	D
LPV DA	1242-7/8	250 (300-7/8)		NA
LNAV/VNAV DA	1253-7/8	261 (300-7/8)		NA
LNAV MDA	1360-1	368 (400-1)		NA
<b>C</b> CIRCLING	1420-1 427 (500-1)	1480-1 487 (500-1)		NA

REIL Rwy 13 and 31  
MIRL Rwy 13-31

GLENCOE, MINNESOTA  
Amdt 1A 16MAY24

# GLENCOE MUNI (GYL) RNAV (GPS) RWY 31

NC-1, 26 DEC 2024 to 23 JAN 2025

NC-1, 26 DEC 2024 to 23 JAN 2025