

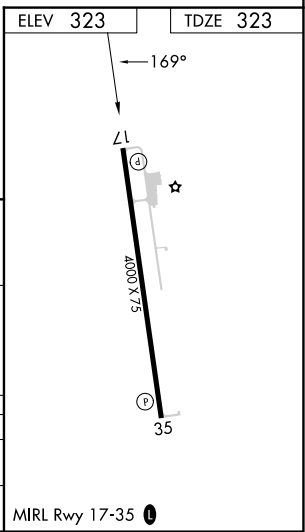
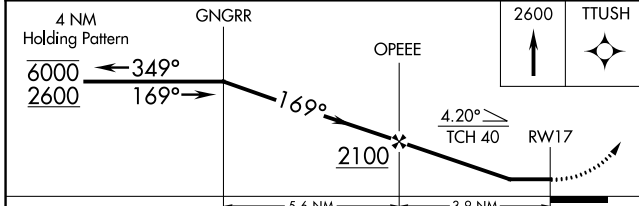
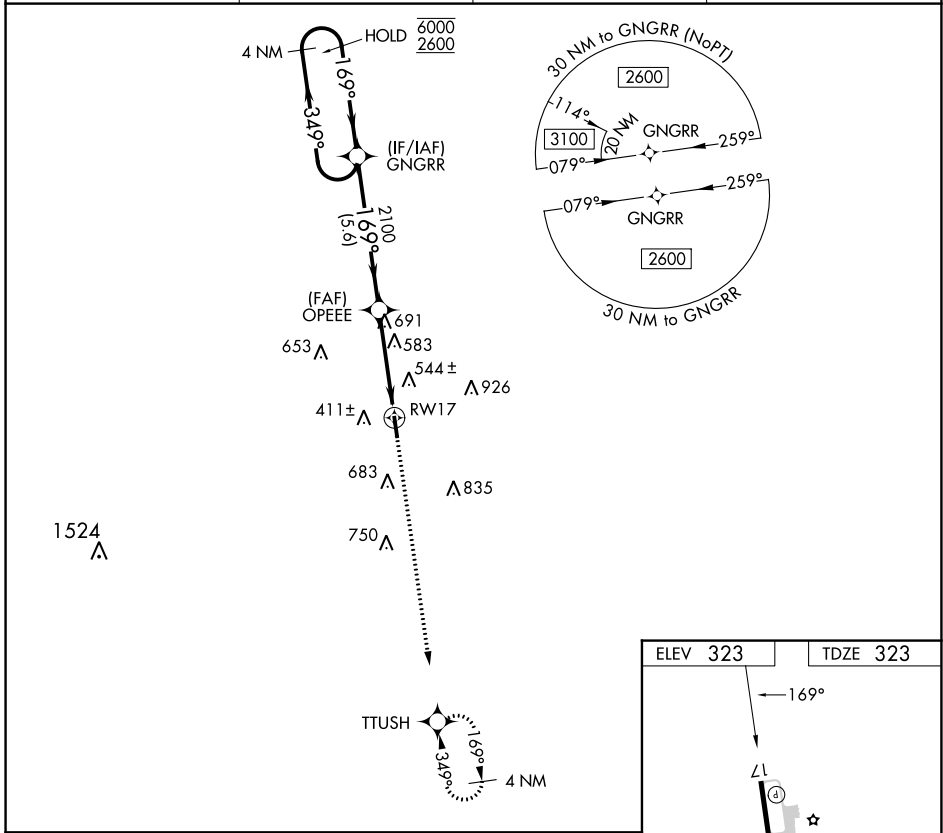
APP CRS 169°	Rwy Idg TDZE Apt Elev	4000 323 323
------------------------	-----------------------------	---

RNAV (GPS) RWY 17

SMITHVILLE CRAWFORD MUNI (84R)

RNP APCH - GPS.	<p>▼ Rwy 17 helicopter visibility reduction below 1 SM NA. ▲ NA Straight-in Rwy 17 NA at night, Circling Rwy 17 NA at night.</p>	MISSED APPROACH: Climb to 2600 direct TTUSH and hold.
-----------------	---	---

GYB AWOS-3 119.225	AUSTIN APP CON 120.875 270.25	CTAF 122.9	123.30
------------------------------	---	----------------------	---------------



CATEGORY	A	B	C	D
LNVA MDA	900-1	577 (600-1)		NA
CIRCLING	960-1	637 (700-1)		NA

SC-3, 26 DEC 2024 to 23 JAN 2025

SC-3, 26 DEC 2024 to 23 JAN 2025