

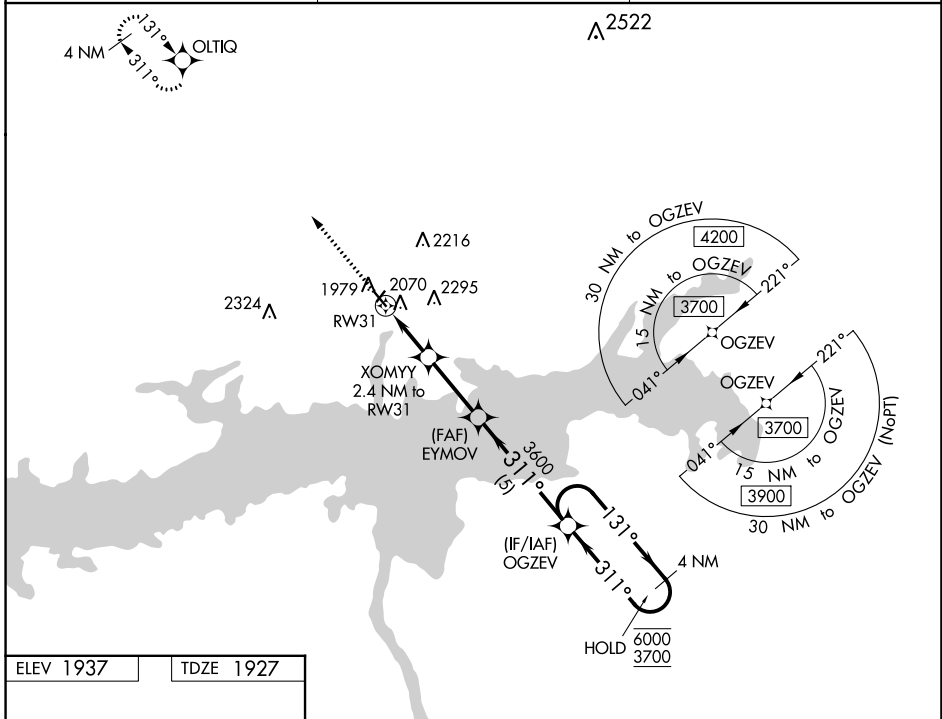
WAAS CH 97740 W31A	APP CRS 311°	Rwy Idg TDZE 1927 Apt Elev 1937
---------------------------------	------------------------	---

RNAV (GPS) RWY 31

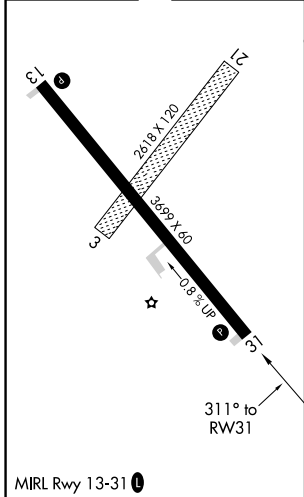
GARRISON MUNI (D05)

RNP APCH	MISSED APPROACH: Climb to 3900 direct OLTIQ and hold.
<p>▼ Circling NA to Rws 3 and 21. Baro-VNAV NA.</p> <p>▲ NA Use Minot Intl altimeter setting.</p>	

MOT ASOS 118.725	MINNEAPOLIS CENTER 127.6 279.6	CTAF 122.9
----------------------------	--	----------------------



ELEV 1937	TDZE 1927
-----------	-----------



3900	OLTIQ	VGSI and RNAV glidepath not coincident (VGSI Angle 3.00/TCH 29).	OGZEV	4 NM Holding Pattern
* LNAV only	XOMYY 2.4 NM to RW31	EYMOV 3600	OGZEV	6000 / 3700
RW31	2700*	3600	131°	311°
2.4 NM	2.8 NM	5 NM		GP 3.00° TCH 40

CATEGORY	A	B	C	D
LPV DA	2250-1	323 (400-1)		NA
LNAV/VNAV DA	2335-1¼	408 (400-1¼)		NA
LNAV MDA	2460-1	533 (600-1)		NA
CIRCLING	2640-1 703 (800-1)	2720-1 783 (800-1)		NA

NC-1, 26 DEC 2024 to 23 JAN 2025

NC-1, 26 DEC 2024 to 23 JAN 2025