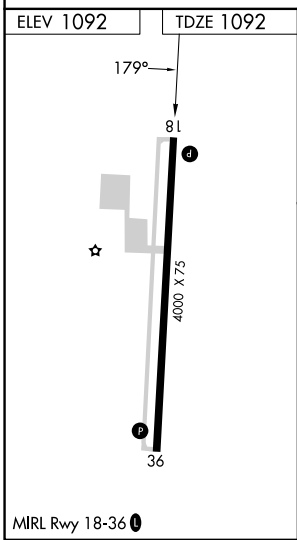
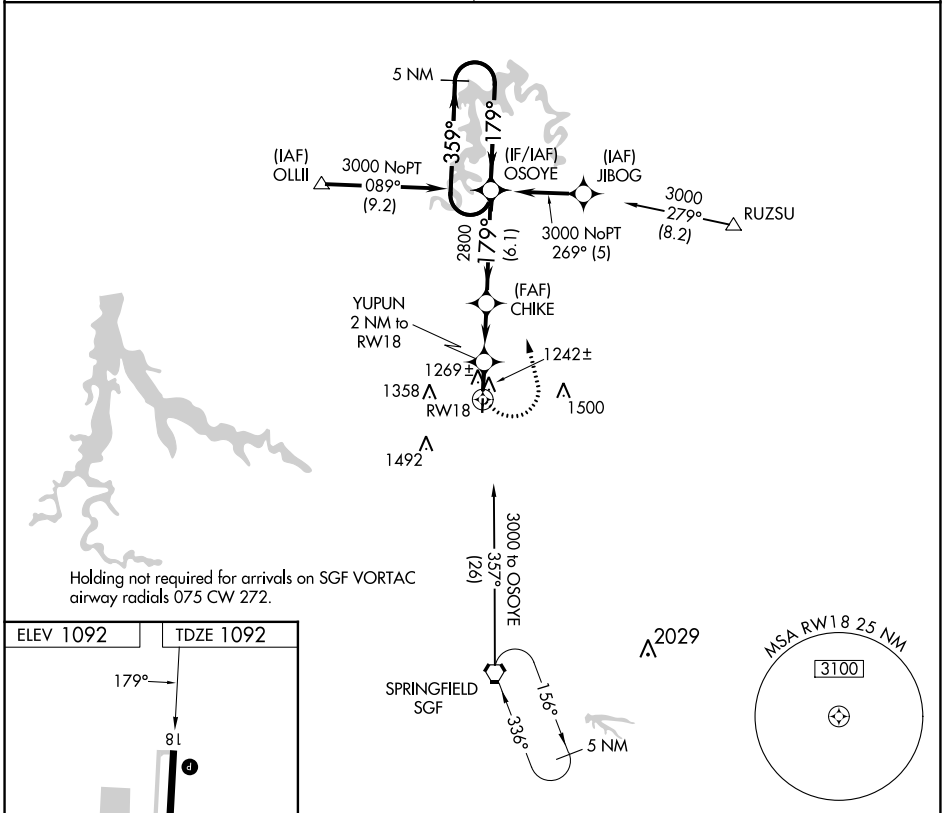


APP CRS	Rwy Idg	4000
179°	TDZE	1092
	Apt Elev	1092

RNAV (GPS) RWY 18

BOLIVAR MUNI (M17)

RNP APCH - GPS.		MISSED APPROACH: Climbing left turn to 3000 direct OSOYE and hold.
<p>▼ Rwy 18 helicopter visibility reduction below 1 SM NA.</p> <p>▲ NA Use Springfield-Branson Ntl altimeter setting. Straight-in and Circling Rwy 18 NA at night.</p>	<p>SPRINGFIELD APP CON</p> <p>124.95 318.2</p>	
		<p>UNICOM</p> <p>123.0 (CTAF) 1</p>



<p>3000 OSOYE</p> <p>YUPUN 2 NM to RW18</p> <p>RW18</p> <p>2 NM</p>	<p>VGSI and descent angles not coincident (VGSI Angle 3.75/TCH 40).</p> <p>CHIKE</p> <p>3.04° TCH 38</p> <p>3.2 NM</p>	<p>OSOYE</p> <p>5 NM Holding Pattern</p> <p>359°</p> <p>179°</p> <p>1760</p> <p>2800</p> <p>6.1 NM</p>	<p>3000</p>
<p>CATEGORY</p>	<p>A</p>	<p>B</p>	<p>C</p>
<p>LNAV MDA</p>	<p>1600-1</p>	<p>508 (600-1)</p>	<p>1600-1 3/8</p> <p>508 (600-1 3/8)</p>
<p>CIRCLING</p>	<p>1660-1</p>	<p>568 (600-1)</p>	<p>1740-1 3/4</p> <p>648 (700-1 3/4)</p>

NC-3, 26 DEC 2024 to 23 JAN 2025

NC-3, 26 DEC 2024 to 23 JAN 2025