

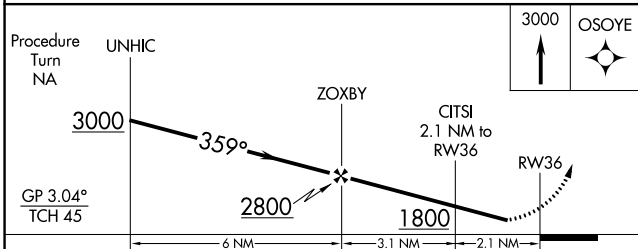
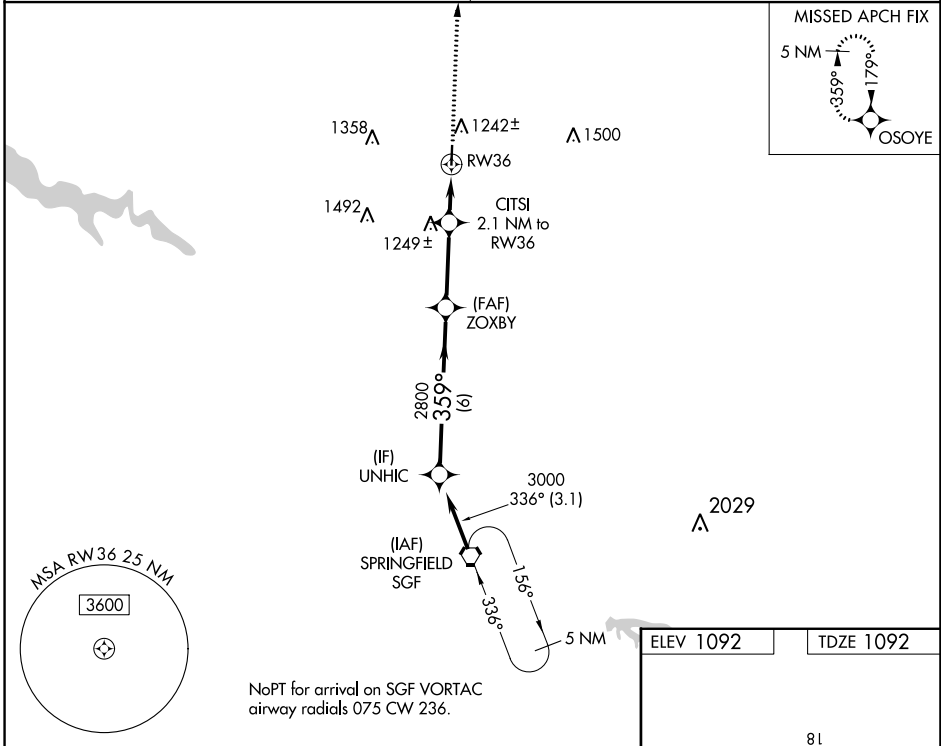
WAAS CH <b>78303</b> <b>W36A</b>	APP CRS <b>359°</b>	Rwy Idg TDZE Apt Elev	<b>4000</b> <b>1092</b> <b>1092</b>
--	------------------------	-----------------------------	---

# RNAV (GPS) RWY 36

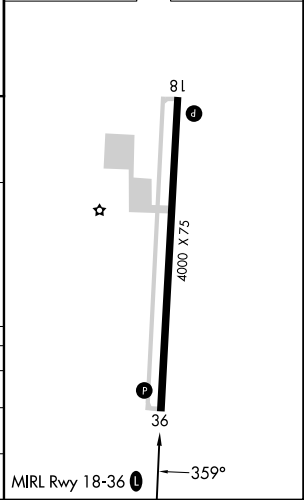
BOLIVAR MUNI (M17)

RNP APCH - GPS.	MISSED APPROACH: Climb to 3000 direct OSOYE and hold.
<p>▼ Rwy 36 helicopter visibility reduction below ¾ SM NA.</p> <p>▲ NA Use Springfield-Branson Ntl Altimeter setting. Circling Rwy 18 NA at night.</p>	

SPRINGFIELD APP CON <b>124.95 318.2</b>	UNICOM <b>123.0 (CTAF) 0</b>
--	---------------------------------



ELEV 1092	TDZE 1092
-----------	-----------



CATEGORY	A	B	C	D
LPV DA	1448-1½ 356 (400-1½)			NA
LNAV MDA	1580-1 488 (500-1)		1580-1¼ 488 (500-1¼)	NA
CIRCLING	1660-1 568 (600-1)		1740-1¾ 648 (700-1¾)	NA

NC-3, 26 DEC 2024 to 23 JAN 2025

NC-3, 26 DEC 2024 to 23 JAN 2025