

APP CRS	Rwy Idg	<b>5100</b>
<b>242°</b>	TDZE	<b>3411</b>
	Apt Elev	<b>3426</b>

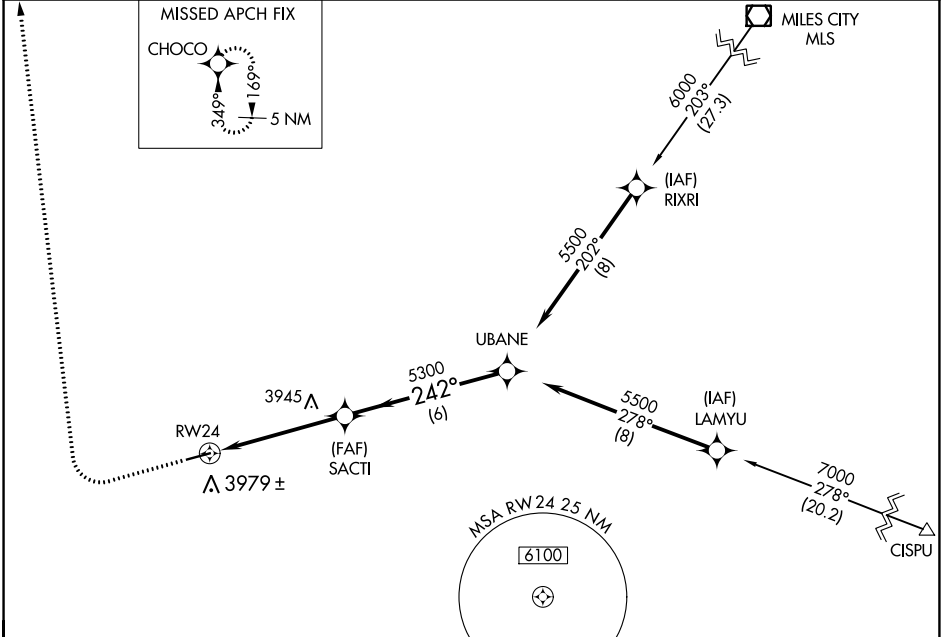
# GPS RWY 24

COLSTRIP (M46)

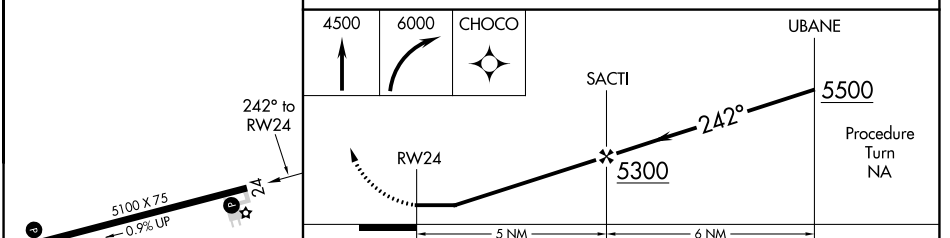
**NA** When local altimeter not received use Miles City altimeter setting. Helicopter visibility reduction below 3/4 SM NA.

**MISSED APPROACH:** Climb to 4500 then climbing right turn to 6000 direct CHOCO WP and hold.

AWOS-AV <b>122.7</b>	SALT LAKE CENTER <b>126.85 305.2</b>	UNICOM <b>122.7 (CTAF)</b> <b>U</b>
-------------------------	-----------------------------------------	----------------------------------------



ELEV 3426	TDZE 3411
-----------	-----------



4500	6000	CHOCO	UBANE
↑	↷	✧	

CATEGORY	A	B	C	D
S-24	4200-1 789 (800-1)	4200-1¼ 789 (800-1¼)	4200-2¼ 789 (800-2¼)	NA
CIRCLING	4340-1¼	914 (1000-1¼)	4340-2¾ 914 (1000-2¾)	NA
MILES CITY ALTIMETER SETTING				
S-24	4440-1¼ 1029 (1100-1¼)	4440-1½ 1029 (1100-1½)	4440-2¾ 1029 (1100-2¾)	NA
CIRCLING	4580-1¼ 1154 (1200-1¼)	4580-1½ 1154 (1200-1½)	4580-3 1154 (1200-3)	NA

MIRL Rwy 6-24 **U**

NW-1, 26 DEC 2024 to 23 JAN 2025

NW-1, 26 DEC 2024 to 23 JAN 2025