

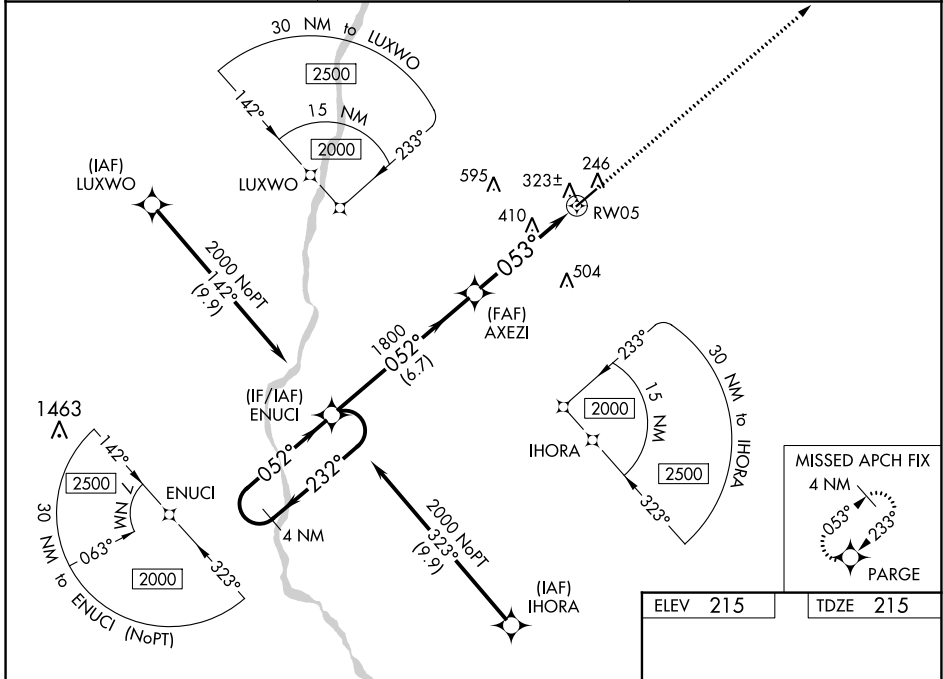
WAAS CH 61121 W05A	APP CRS 053°	Rwy Idg TDZE 215 Apt Elev 215	5494
--	------------------------	---	-------------

RNAV (GPS) RWY 5

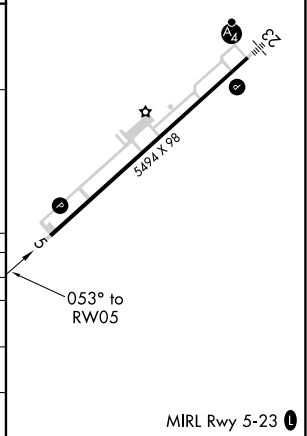
EARLY COUNTY (BIJ)

RNP APCH - GPS.	<p>▼ For uncompensated Baro-VNAV systems, LNAV/VNAV NA below -15°C or above 54°C. ⚠ Rwy 5 helicopter visibility reduction below ¼ SM NA. Baro-VNAV and VDP NA when using Bainbridge altimeter setting. When local altimeter setting not received, use Bainbridge altimeter setting and increase LPV DA to 605 feet and all visibilities ½ SM. Increase LNAV/VNAV DA to 657 feet and all visibilities ¾ SM. Increase all MDA 80 feet and LNAV visibility Cat C/D ¼ SM, and Circling visibility Cat C/D ¼ SM.</p>	MISSED APPROACH: Climb to 3000 direct PARGE and hold.
-----------------	--	--

AWOS-3PT 118.475	CAIRNS APP CON ★ 125.4 327.125	CTAF 122.9 0
----------------------------	--	------------------------



4 NM Holding Pattern ENUCI		VGSI and RNAV glidepath not coincident (VGSI Angle 3.00/TCH 34).		3000	PARGE
2000 ← 232°		→ 052°		*LNAV only.	
GP 3.00° TCH 59		1800		*1.5 NM to RW05	
		AXEZI 1800		RW05	
		053°		053° to RW05	
		6.7 NM		3.3 NM	
				1.5 NM	
CATEGORY	A	B	C	D	
LPV DA	528-1		313 (400-1)		
LNAV/VNAV DA	580-1		365 (400-1)		
LNAV MDA	740-1	525 (600-1)		740-1½	525 (600-1½)
CIRCLING	740-1	525 (600-1)		860-1¾	960-2½
				645 (700-1¾)	745 (800-2½)



SE-4, 26 DEC 2024 to 23 JAN 2025

SE-4, 26 DEC 2024 to 23 JAN 2025