

WAAS CH 65826 W20A	APP CRS 197°	Rwy Idg TDZE Apt Elev	4000 348 348
--	------------------------	-----------------------------	---

RNAV (GPS) RWY 20

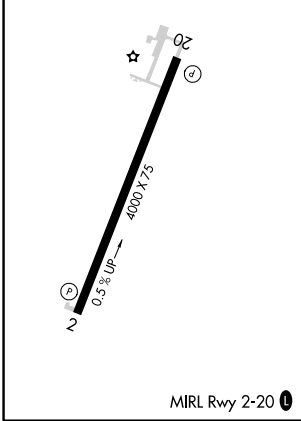
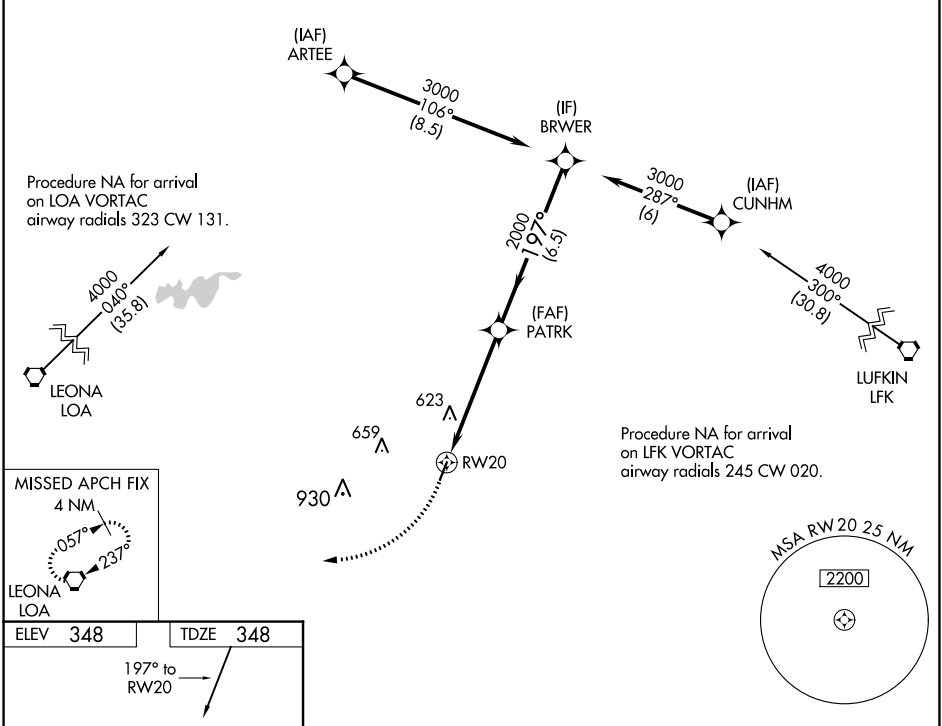
HOUSTON COUNTY (DKR)

RNP APCH.

Procedure NA at night.
Rwy 20 helicopter visibility reduction below 1 SM NA.

MISSED APPROACH: Climbing right turn to 4000 direct LOA VORTAC and hold.

AWOS-3PT 118.775	HOUSTON CENTER 134.8 269.6	CTAF 122.9
----------------------------	--------------------------------------	----------------------



4000		LOA	Visual Segment - Obstacles.			
RW20		PATRK	BRWR			
5.1 NM		6.5 NM				
CATEGORY	A	B	C	D		
LP MDA	880-1	532 (600-1)	NA			
LNAV MDA	900-1	552 (600-1)	NA			
CIRCLING	900-1	980-1	552 (600-1)	632 (700-1)	NA	

SC-5, 26 DEC 2024 to 23 JAN 2025

SC-5, 26 DEC 2024 to 23 JAN 2025