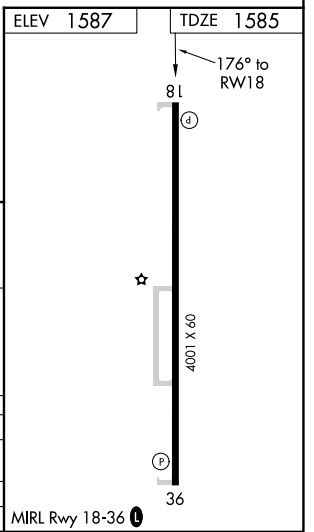
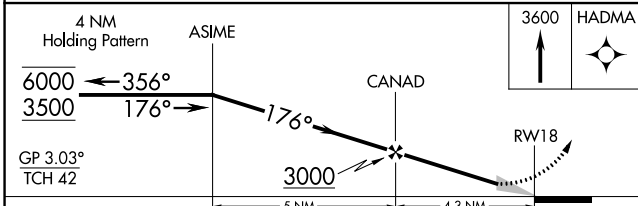
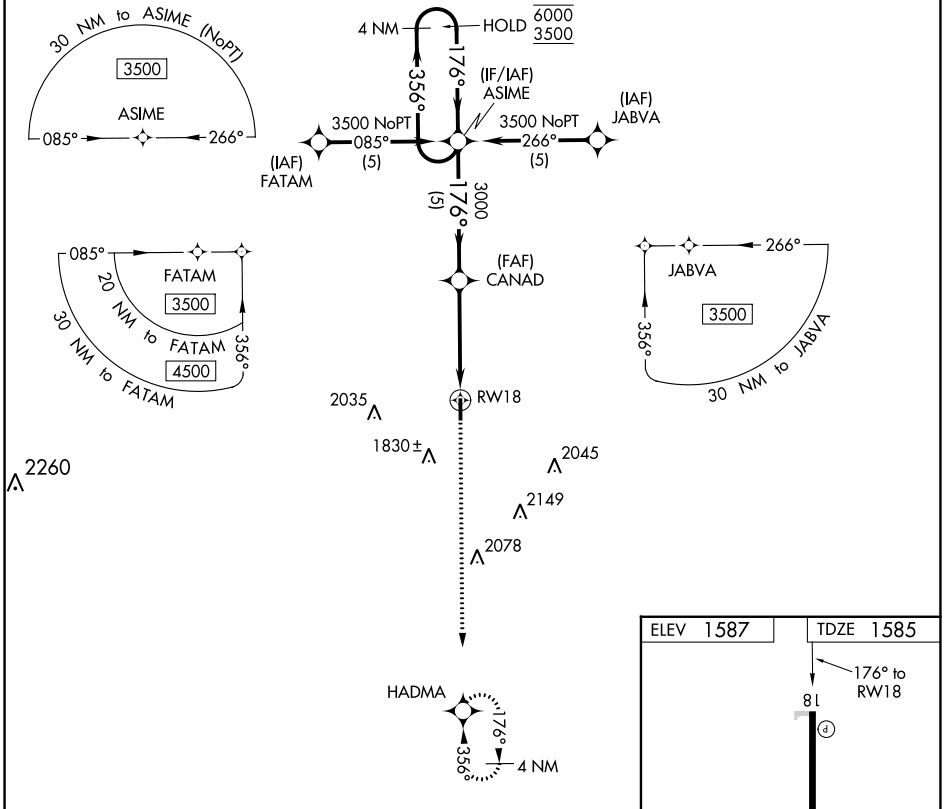


APP CRS <b>176°</b>	Rwy Idg TDZE Apt Elev	<b>4001</b> <b>1585</b> <b>1587</b>
------------------------	-----------------------------	---

# RNAV (GPS) RWY 18

HINTON MUNI (208)

RNP APCH-GPS.		MISSED APPROACH: Climb to 3600 direct HADMA and hold.
Baro-VNAV NA. Use Weatherford altimeter setting.		
OJA AWOS-3PT <b>118.575</b>	FORT WORTH CENTER <b>128.4 269.37</b>	UNICOM <b>123.05 (CTAF) 0</b>



CATEGORY	A	B	C	D
LNAV/VNAV DA	2001-1½	416 (500-1½)		NA
LNAV MDA	2060-1	475 (500-1)		NA
CIRCLING	2200-1	613 (700-1)		NA

SC-1, 26 DEC 2024 to 23 JAN 2025

SC-1, 26 DEC 2024 to 23 JAN 2025