

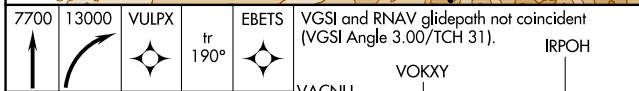
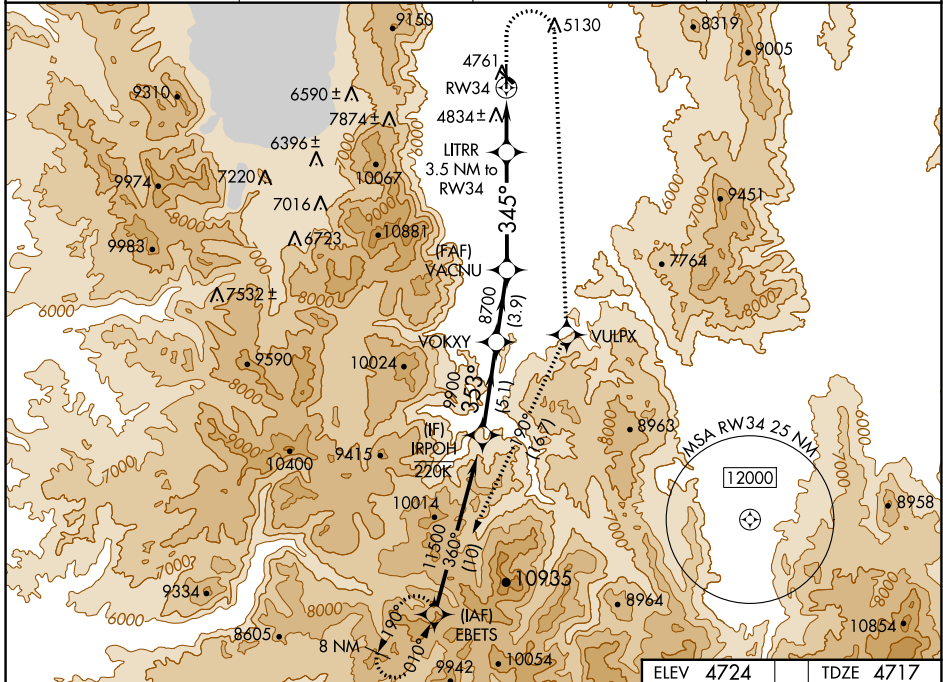
APP CRS	Rwy Idg	<b>7399</b>
<b>345°</b>	TDZE	<b>4717</b>
	Apt Elev	<b>4724</b>

# RNAV (GPS) RWY 34

MINDEN-TAHOE (MEV)

RNP APCH - GPS.	MISSED APPROACH: Climb to 7700 then climbing right turn to 13000 direct VULPX and on track 190° to EBETS and hold.
Baro-VNAV NA. Circling NA to Rwy's 12G and 30G.	*Missed approach requires minimum climb of 310 feet per NM to 6700.

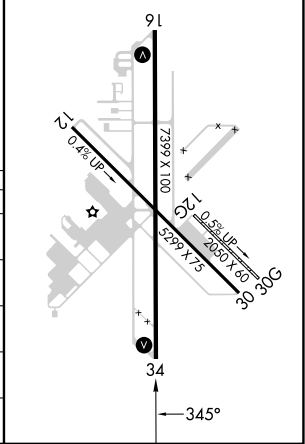
AWOS-3PT <b>119.325</b>	NORCAL APP CON <b>119.2 279.55</b>	CINC DEL <b>133.25</b>	UNICOM <b>123.05 (CTAF) ①</b>
----------------------------	---------------------------------------	---------------------------	----------------------------------



ELEV 4724	TDZE 4717
-----------	-----------

HIRL Rwy 16-34 ①  
REIL Rwy's 16 and 34 ①

7700	13000	VULPX	190°	EBETS	VGSJ and RNAV glidepath not coincident (VGSJ Angle 3.00/TCH 31).	IRPOH
					VACNU	VOKXY
					LITRR 3.5 NM to RW34	8700
					1.9 NM to RW34	9900
					6160	11500
					8700	GP 3.77° TCH 45
					1.9 NM	1.6 NM
					6.3 NM	3.9 NM
					5.1 NM	



CATEGORY	A	B	C	D
LNAV/VNAV DA*	5145-1¼	428 (500-1¼)		NA
LNAV/VNAV DA	5542-2½	825 (900-2½)		NA
LNAV MDA*	5340-1	623 (700-1)	5340-1¼ 623 (700-1¼)	NA
LNAV MDA	5720-1¼ 1003 (1000-1¼)	5720-1½ 1003 (1000-1½)	5720-3 1003 (1000-3)	NA
CIRCLING	5720-1¼ 996 (1000-1¼)	5720-1½ 996 (1000-1½)	5920-3 1196 (1200-3)	NA