

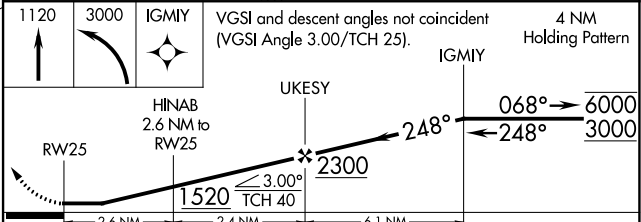
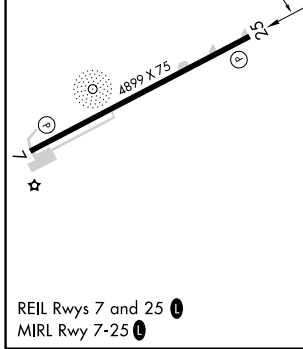
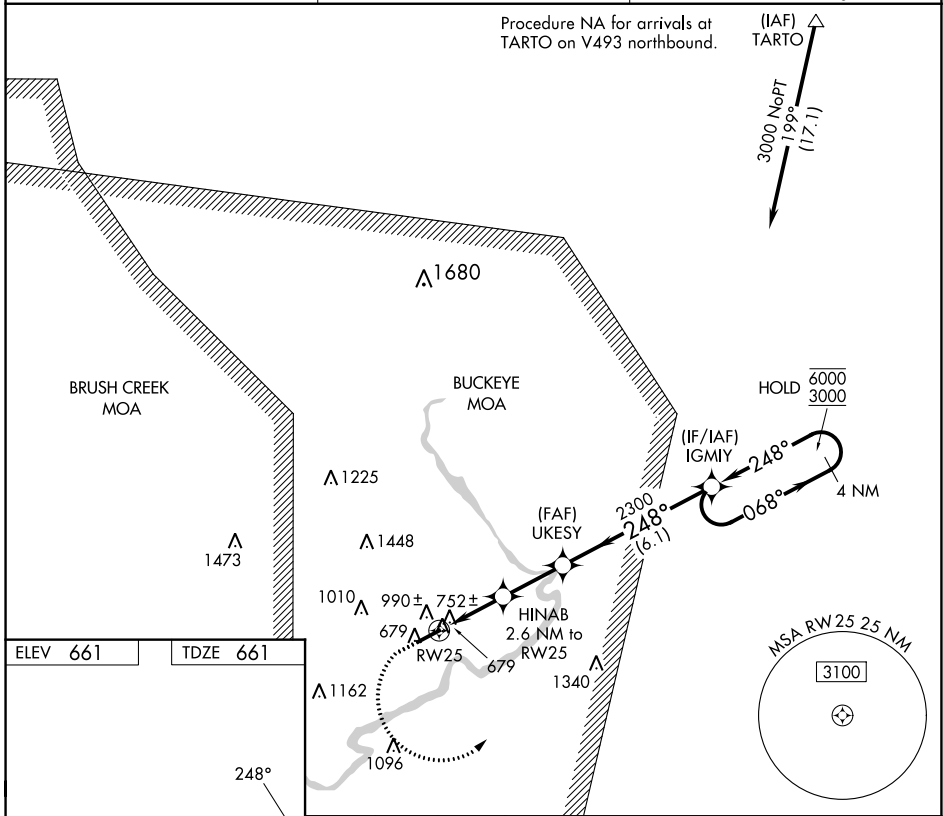
WAAS CH 97537 W25A	APP CRS 248°	Rwy Idg TDZE 661 Apt Elev 661	4899 661 661
--	------------------------	---	---

RNAV (GPS) RWY 25

PIKE COUNTY (EOP)

RNP APCH - GPS.		MISSED APPROACH: Climb to 1120 then climbing left turn to 3000 direct IGMYY and hold.
<p>▼ Rwy 25 helicopter visibility reduction below 3/4 SM NA.</p> <p>▲ NA Circling Rwy 7 NA at night.</p> <p>When local altimeter setting not received, use PMH altimeter setting.</p>		

AWOS-3PT 121.45	INDIANAPOLIS CENTER 135.575 290.5	UNICOM 123.0 (CTAF)
---------------------------	---	-------------------------------



CATEGORY	A	B	C	D
LP MDA	1060-1	399 (400-1)	1060-1 1/8	399 (400-1 1/8)
LNAV MDA	1260-1	599 (600-1)	1260-1 3/4	599 (600-1 3/4)
◼ CIRCLING	1500-1 1/4 839 (900-1 1/4)	1520-1 1/4 859 (900-1 1/4)	1580-2 3/4 919 (1000-2 3/4)	1700-3 1039 (1100-3)

EC-2, 26 DEC 2024 to 23 JAN 2025

EC-2, 26 DEC 2024 to 23 JAN 2025