

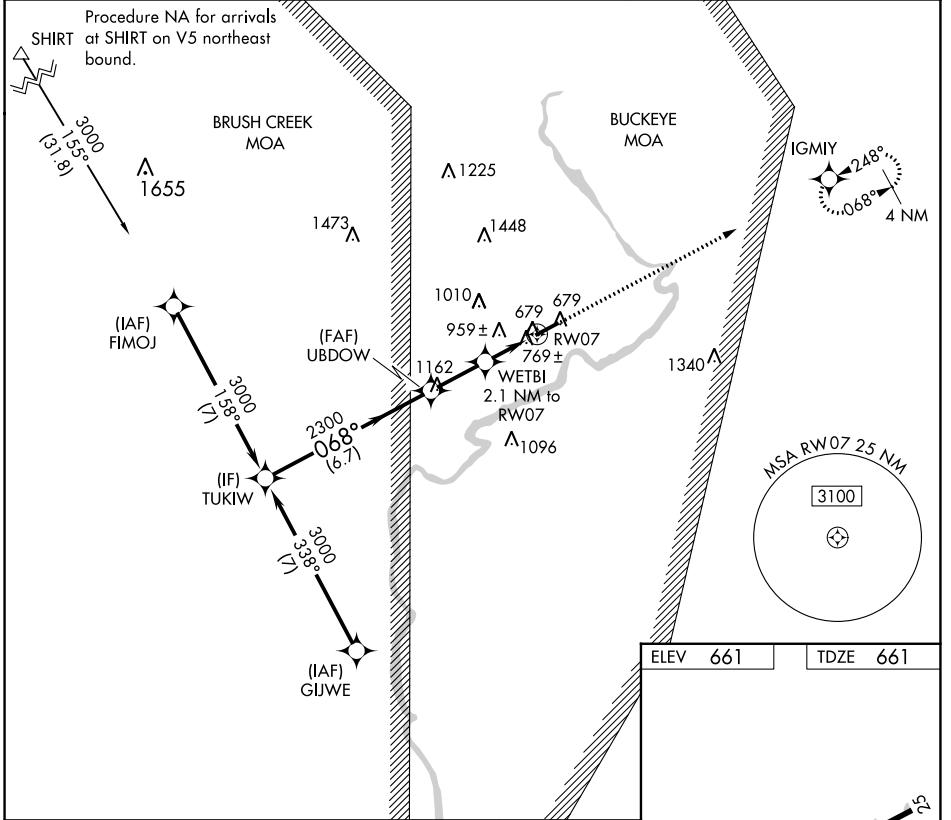
WAAS CH 56437 W07A	APP CRS 068°	Rwy Idg 4899 TDZE 661 Apt Elev 661
--	------------------------	---

RNAV (GPS) RWY 7

PIKE COUNTY (EOP)

RNP APCH - GPS	Rwy 7 helicopter visibility reduction below 1 SM NA. When local climeter setting not received, use PMH altimeter setting. Straight-in Rwy 7 NA at night, Circling Rwy 7 NA at night.	MISSED APPROACH: Climb to 3000 direct IGMYY and hold.
----------------	--	---

AWOS-3PT 121.45	INDIANAPOLIS CENTER 135.575 290.5	UNICOM 123.0 (CTAF)
---------------------------	---	-------------------------------



Visual Segment - Obstacles.

TUKIW	UBDOWN	WETBI	RW07
3000	2300	1480	
6.7 NM	2.2 NM	2.1 NM	

Visual Segment - Obstacles. 3000 IGMYY

REIL Rwy 7 and 25 (1)
MIRL Rwy 7-25 (1)

EC-2, 26 DEC 2024 to 23 JAN 2025

EC-2, 26 DEC 2024 to 23 JAN 2025