

APP CRS 047°	Rwy Idg TDZE Apt Elev	6027 2454 2454
------------------------	-----------------------------	---

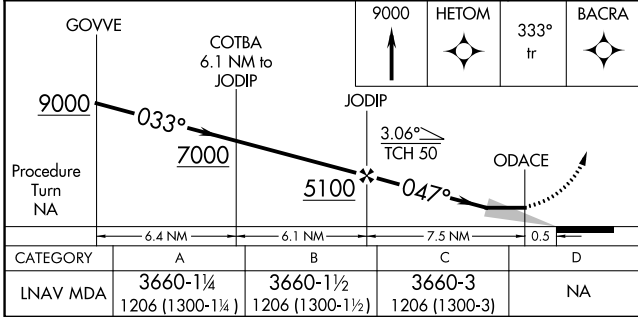
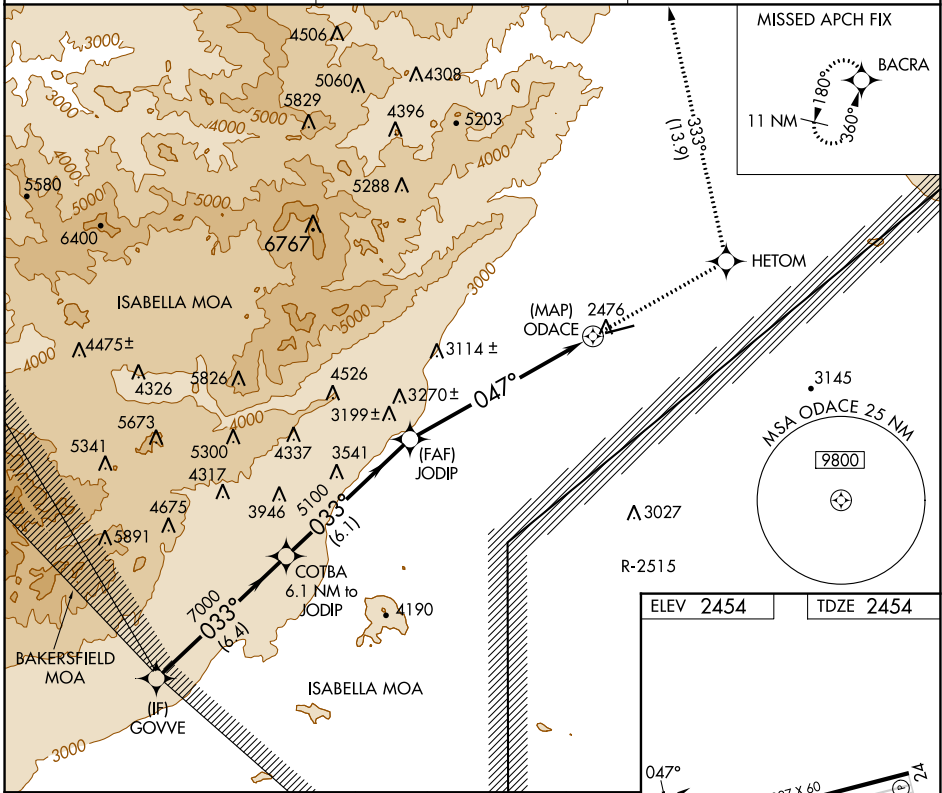
RNAV (GPS) RWY 6

CALIFORNIA CITY MUNI (L71)

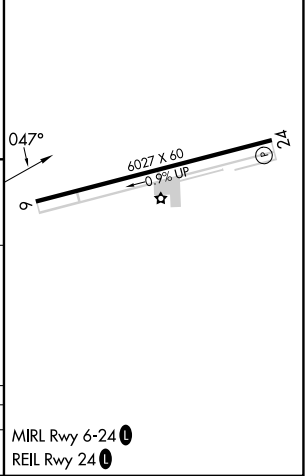
RNP APCH.
RADAR required.
 ▼ If local altimeter setting not received, use Edwards AFB altimeter setting and increase all MDAs 60 feet; if neither received, procedure not authorized.
 ▲ NA

MISSED APPROACH: Climb to 9000 direct HETOM and via 333° track to BACRA and hold, continue climb-in-hold to 9000.

AWOS-1 120,875	JOSHUA APP CON 133.65 348.7	UNICOM 122.7 (CTAF)
--------------------------	---------------------------------------	-------------------------------



ELEV 2454	TDZE 2454
-----------	-----------



SW-3, 26 DEC 2024 to 23 JAN 2025

SW-3, 26 DEC 2024 to 23 JAN 2025

MIRL Rwy 6-24
REIL Rwy 24