

WAAS CH 56244 W02A	APP CRS 022°	Rwy Idg TDZE Apt Elev	3501 334 339
--	------------------------	-----------------------------	---

RNAV (GPS) RWY 2

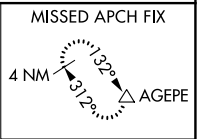
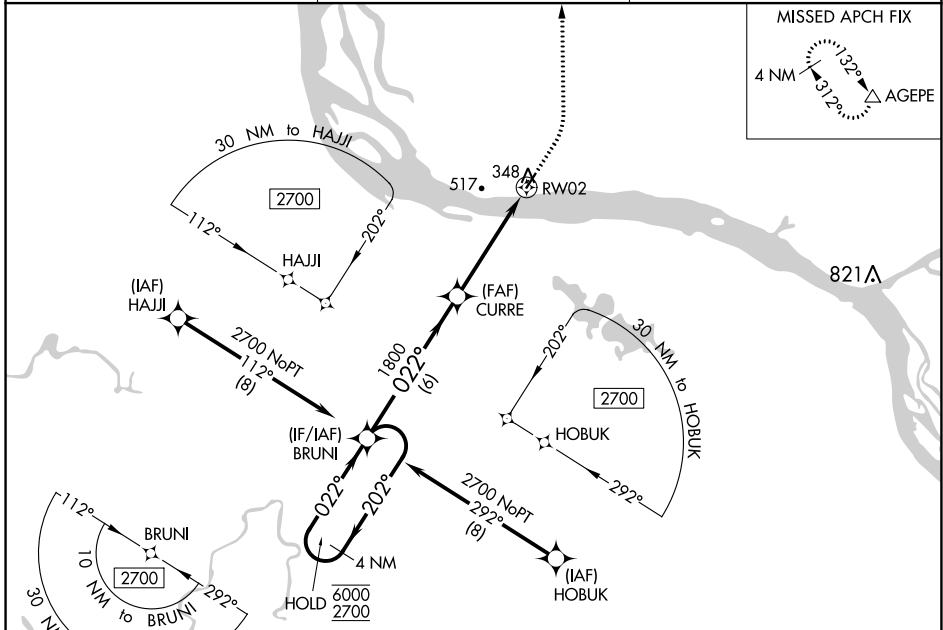
MOUNTAIN VILLAGE (MOU) (PAMO)

RNP APCH.

▼ For uncompensated Baro-VNAV systems, LNAV/VNAV NA below -25°C or above 54°C.

MISSED APPROACH: Climb to 760 then climbing left turn to 3000 direct AGEPE and hold, continue climb-in-hold to 3000.

AWOS-3P 118.35	ANCHORAGE CENTER 124.0	CTAF 122.90
--------------------------	----------------------------------	-----------------------



VGSI and RNAV glidepath not coincident (VGSI Angle 3.00/TCH 25).

4 NM Holding Pattern BRUNI

6000 ← 202°
2700 → 022°

GP 3.00°
TCH 30

1800
1800

6 NM
3.7 NM
0.9 NM

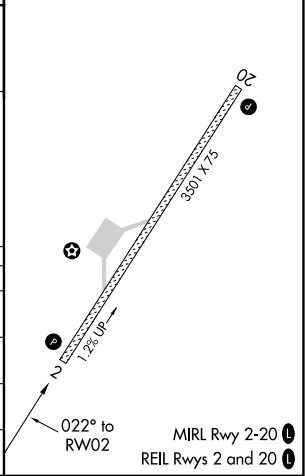
760 3000 AGEPE

*LNAV only

*0.9 NM to RWY 2

ELEV 339	TDZE 334
----------	----------

CATEGORY	A	B	C	D
LPV DA		534-1	200 (200-1)	
LNAV/VNAV DA		584-1	250 (300-1)	
LNAV MDA		600-1	266 (300-1)	
C CIRCLING	700-1 361 (400-1)	840-1 501 (600-1)	840-1½ 501 (600-1½)	900-2 561 (600-2)



AK, 26 DEC 2024 to 20 FEB 2025

AK, 26 DEC 2024 to 20 FEB 2025