

PIKEVILLE, KENTUCKY

AL-9449 (FAA)

23278

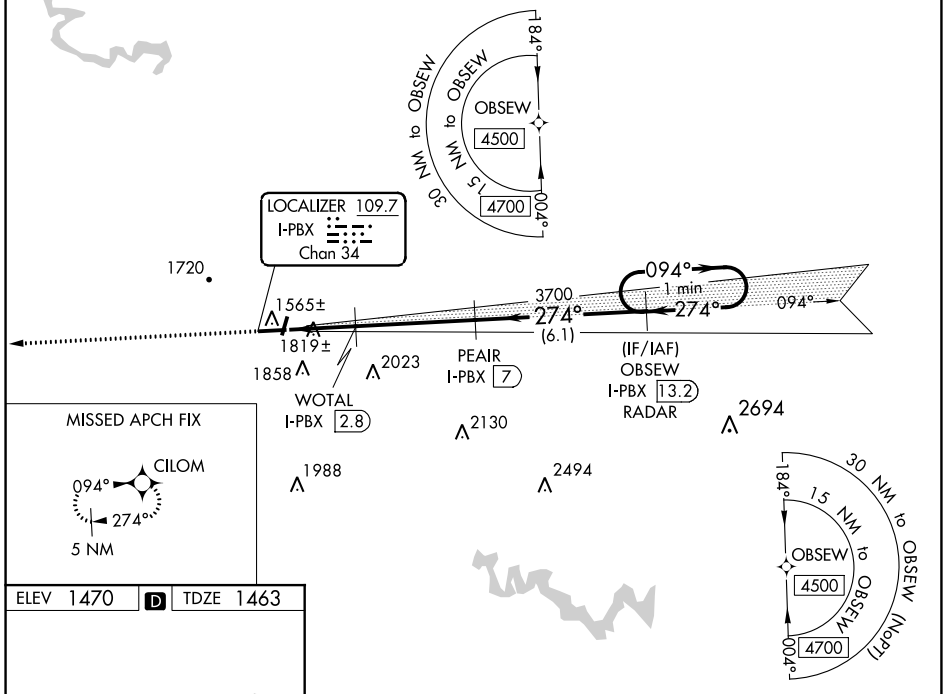
LOC/DME I-PBX <b>109.7</b> Chan <b>34</b>	APP CRS <b>274°</b>	Rwy Idg <b>4650</b> TDZE <b>1463</b> Apt Elev <b>1470</b>
---	------------------------	---

**ILS or LOC RWY 27**  
PIKE COUNTY/HATCHER FLD (P.BX)

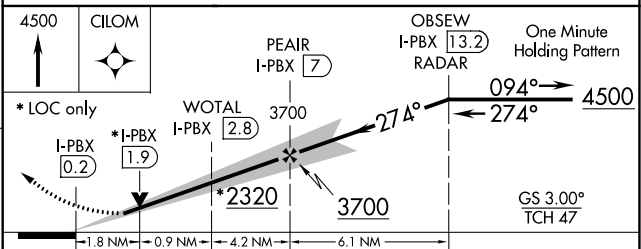
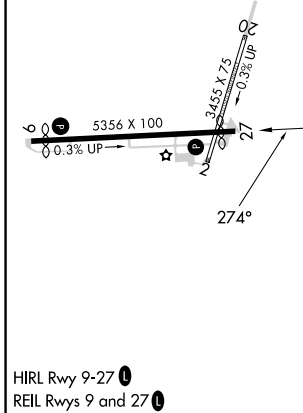
<b>▼</b> <b>▲</b> NA	DME and RNAV 1-GPS required. Circling NA to Rwy's 2 and 20.	MISSED APPROACH: Climb to 4500 direct CILOM and hold.
-------------------------	--	--

AWOS-3PT <b>121.225</b>	INDIANAPOLIS CENTER <b>126.575 257.85</b>	UNICOM <b>122.8</b> (CTAF) <b>0</b>
----------------------------	--	--

**RNAV 1-GPS or RADAR REQUIRED**



ELEV <b>1470</b>	<b>D</b>	TDZE <b>1463</b>
------------------	----------	------------------



CATEGORY	A	B	C	D
S-ILS 27	1663-1 200 (200-1)			
S-LOC 27	2080-1	617 (700-1)	2080-1¾	617 (700-1¾)
<b>C</b> CIRCLING	2120-1 650 (700-1)	2160-1 690 (700-1)	2160-2 690 (700-2)	2460-3 990 (1000-3)

PIKEVILLE, KENTUCKY  
Amdt 2 17AUG17

37°34'N-82°34'W

PIKE COUNTY/HATCHER FLD (P.BX)  
**ILS or LOC RWY 27**

SE-1, 26 DEC 2024 to 23 JAN 2025

SE-1, 26 DEC 2024 to 23 JAN 2025