

WAAS CH 61240 W09A	APP CRS 094°	Rwy Idg TDZE 1459 Apt Elev 1470	4650
--	------------------------	---	-------------

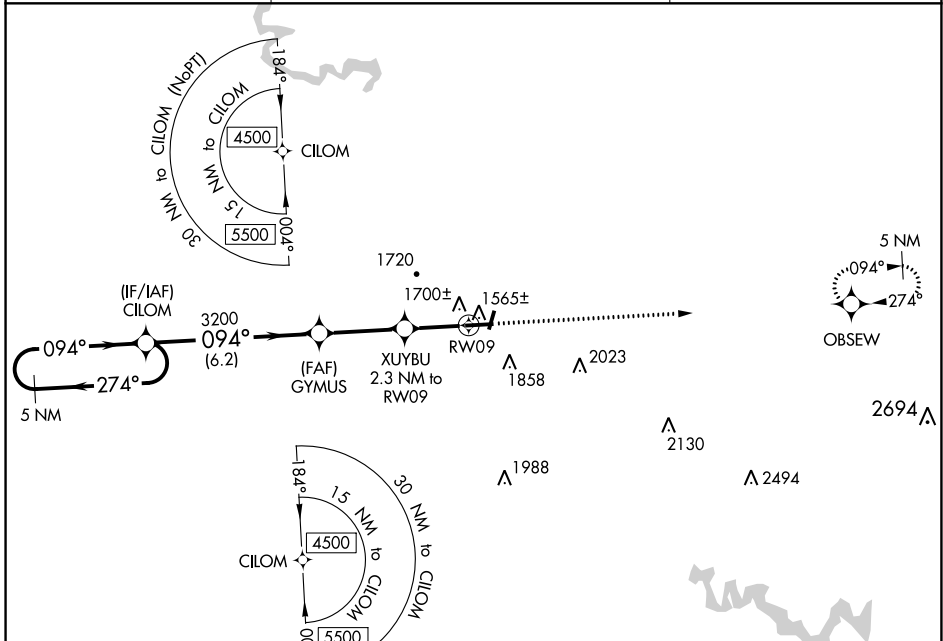
RNAV (GPS) RWY 9

PIKE COUNTY/HATCHER FLD (P.B.X)

⚠ For uncompensated Baro-VNAV systems, LNAV/VNAV NA below -17°C (0°F) or above 54°C (130°F). DME/DME RNP-0.3 NA. Rwy 9 helicopter visibility reduction below ¾ SM NA. Circling NA to Rws 2 and 20.

MISSED APPROACH: Climb to 4500 direct OBSEW and hold.

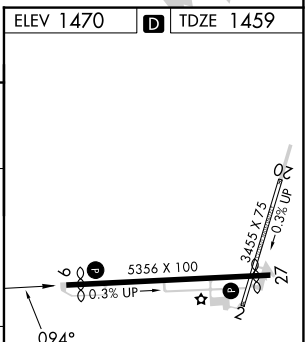
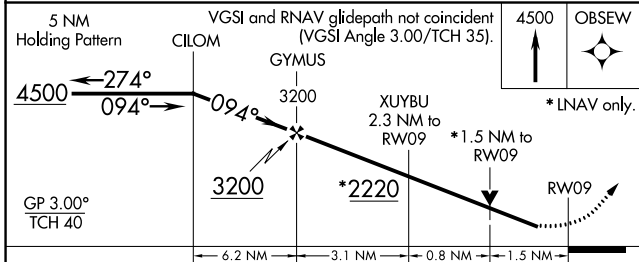
AWOS-3PT 121.225	INDIANAPOLIS CENTER 126.575 257.85	UNICOM 122.8 (CTAF) 📶
----------------------------	--	--



SE-1, 26 DEC 2024 to 23 JAN 2025

SE-1, 26 DEC 2024 to 23 JAN 2025

ELEV 1470	D TDZE 1459
-----------	--------------------



CATEGORY	A	B	C	D
LPV DA		1709-1	250 (300-1)	
LNAV/VNAV DA		1891-1½	432 (500-1½)	
LNAV MDA	1960-1	501 (500-1)	1960-1⅓	501 (500-1⅓)
C CIRCLING	2120-1 650 (700-1)	2160-1 690 (700-1)	2160-2 690 (700-2)	2460-3 990 (1000-3)

HIRL Rwy 9-27 **📶**
REIL Rws 9 and 27 **📶**