

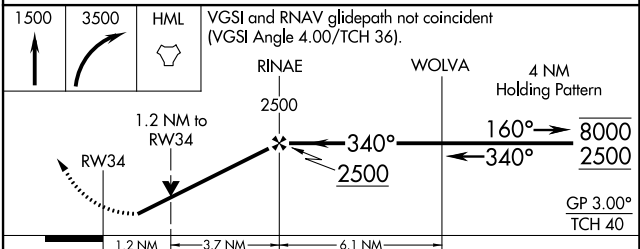
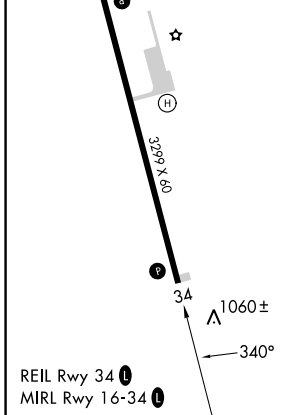
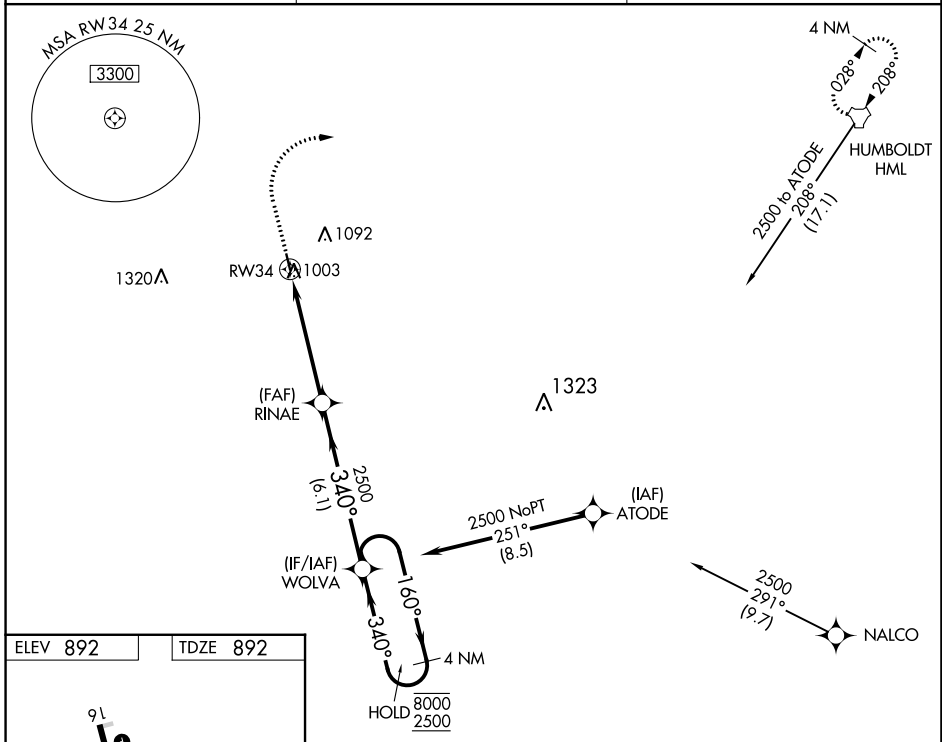
WAAS CH 45630 W34A	APP CRS 340°	Rwy Idg TDZE Apt Elev	3299 892 892
--	------------------------	-----------------------------	---

RNAV (GPS) RWY 34

CAVALIER MUNI (2C8)

RNP APCH-GPS.	MISSED APPROACH: Climb to 1500 then climbing right turn to 3500 direct HML TACAN and hold.
<p>⚠ Circling Rwy 16 NA at night.</p> <p>⚠ Rwy 34 helicopter visibility reduction below 3/4 SM NA.</p>	

AWOS-3 118.275	MINNEAPOLIS CENTER 132.15 269.6	UNICOM 122.8 (CTAF) 0
--------------------------	---	---------------------------------



CATEGORY	A	B	C	D
LPV DA	1157-1 265 (300-1)			NA
LNAV MDA	1440-1	548 (600-1)	1440-1½ 548 (600-1½)	NA
C CIRCLING	1440-1	548 (600-1)	1440-1½ 548 (600-1½)	NA

NC-1, 26 DEC 2024 to 23 JAN 2025

NC-1, 26 DEC 2024 to 23 JAN 2025