

WAAS CH 99630 W09A	APP CRS 100°	Rwy Idg TDZE Apt Elev	3700 1777 1779
--	------------------------	-----------------------------	---

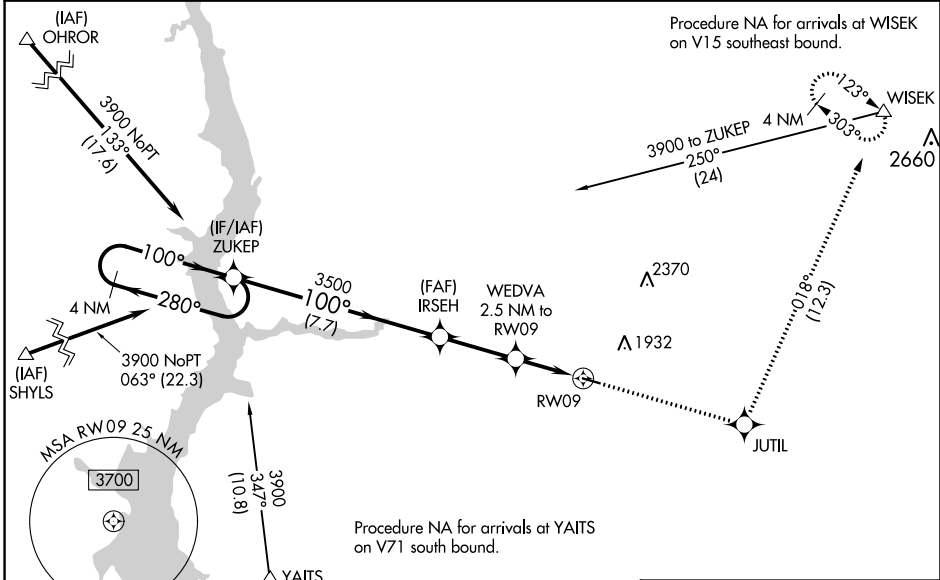
RNAV (GPS) RWY 9

LINTON MUNI (7L2)

▽ For uncompensated Baro-VNAV systems, LNAV/VNAV NA below -18°C (0°F) or above 54°C (130°F). DME/DME RNP-0.3 NA. When local altimeter setting not received, use Bismarck Muni altimeter setting: increase LPV DA to 2134 feet and all visibilities ¼ SM; increase LNAV/VNAV DA to 2198 and all visibilities ½ SM; increase all MDAs 120 feet and visibility LNAV Cat C ¼ SM and Circling Cat C ½ SM. Baro-VNAV and VDP NA when using Bismarck Muni altimeter setting.

MISSED APPROACH: Climb to 4700 direct JUTIL and on track 018° to WISEK and hold.

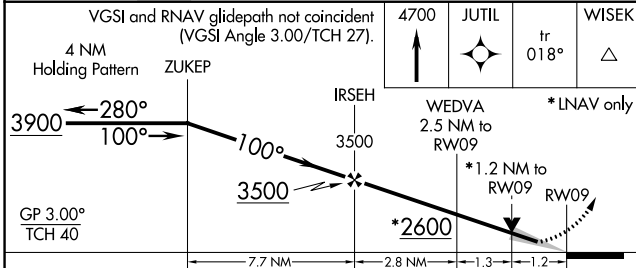
ASOS-3 118.175	MINNEAPOLIS CENTER 135.25 256.7	CTAF 122.9
--------------------------	---	----------------------



NC-1, 26 DEC 2024 to 23 JAN 2025

NC-1, 26 DEC 2024 to 23 JAN 2025

ELEV 1779	TDZE 1777
-----------	-----------



CATEGORY	A	B	C	D
LPV DA	2027-1	250 (300-1)		NA
LNAV/VNAV DA	2091-1	314 (400-1)		NA
LNAV MDA	2160-1	383 (400-1)	2160-1½ 383 (400-1½)	NA
CIRCLING	2220-1 441 (500-1)	2360-1 581 (600-1)	2440-1¾ 661 (700-1¾)	NA

