

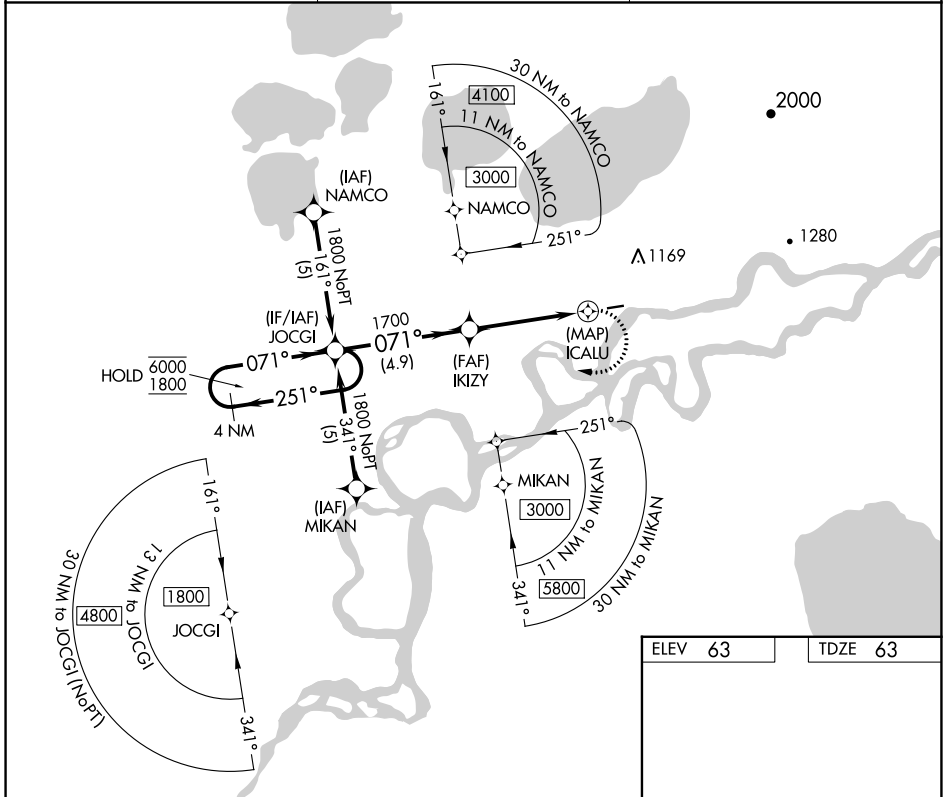
APP CRS	Rwy ldg	3198
071°	TDZE	63
	Apt Elev	63

RNAV (GPS) RWY 7

KALSKAG (KLG)(PALG)

RNP APCH - GPS.	MISSED APPROACH: Climbing right turn to 1800 direct JOCGI and hold.
<p>▼ Rwy 7 helicopter visibility reduction below 1 SM NA.</p> <p>▲ Procedure NA at night. Circling NA north of Rwy 7-25.</p>	

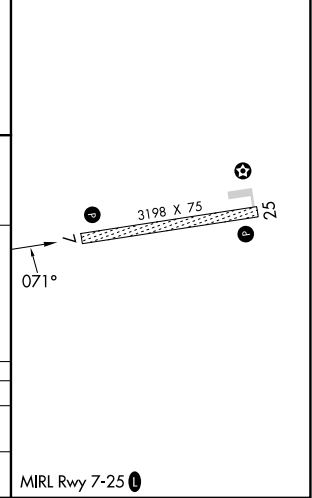
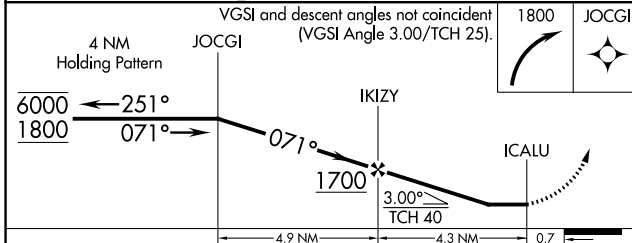
AWOS-3P 119.025	ANCHORAGE CENTER 118.15 251.05	UNICOM 122.8 (CTAF) 0
---------------------------	------------------------------------------	---------------------------------



AK, 26 DEC 2024 to 20 FEB 2025

AK, 26 DEC 2024 to 20 FEB 2025

ELEV 63	TDZE 63
---------	---------



CATEGORY	A	B	C	D
LNVA MDA	560-1	497 (500-1)		NA
C CIRCLING	560-1 497 (500-1)	700-1 637 (700-1)		NA

MIRL Rwy 7-25 0