

| | | | |
|--|------------------------|-----------------------------|---------------------------------------|
| WAAS CH 87033 W17A | APP CRS 173° | Rwy Idg TDZE Apt Elev | 3200 20 20 |
|--|------------------------|-----------------------------|---------------------------------------|

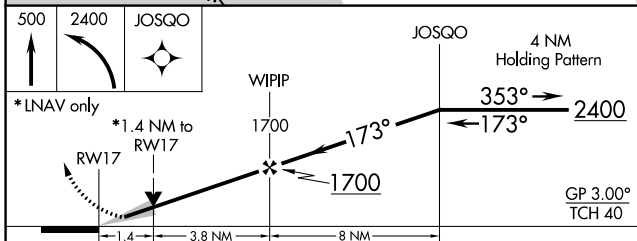
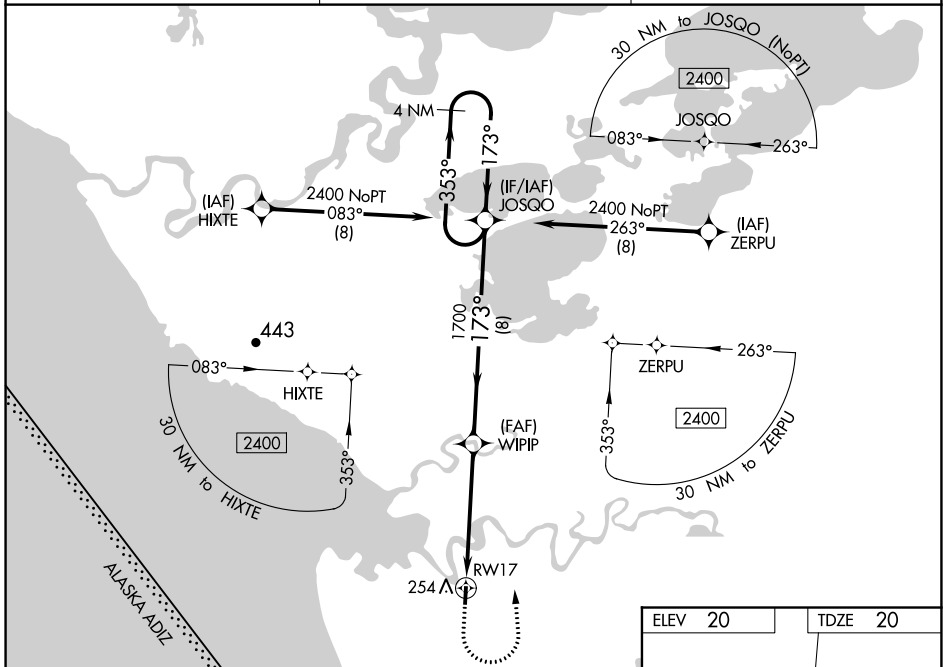
RNAV (GPS) RWY 17

KIPNUK (IIK) (PAKI)

⚠ Baro-VNAV NA when using Toksook Bay altimeter setting. For uncompensated Baro-VNAV systems, LNAV/VNAV NA below -20°C (-4°F) or above 54°C (130°F). DME/DME RNP-0.3 NA. Procedure NA at night. VDP NA when using Toksook Bay altimeter setting. When local altimeter setting not received use Toksook Bay altimeter setting; increase LPV DA to 389 feet and visibility all Cats ¼ SM. Increase LNAV/VNAV DA to 553 feet and visibility all Cats ½ SM. Increase all MDA 120 feet. Increase LNAV Cat C and D visibility to 1¼ SM, Circling Cat C to 2 SM, Cat D to 2¼ SM.

MISSED APPROACH:
Climb to 500 then climbing left turn to 2400 direct JOSQO and hold.

| | | |
|---------------------------|--|------------------------|
| AWOS-3P 118.325 | ANCHORAGE CENTER 125.2 372.0 | CTAF 122.7 0 |
|---------------------------|--|------------------------|



| | |
|--|---------|
| ELEV 20 | TDZE 20 |
| <p>173° to RWY 17</p> <p>Z1</p> <p>3200 X 60</p> <p>35</p> | |
| <p>MIRL Rwy 17-35 0</p> | |

| CATEGORY | A | B | C | D |
|-------------------|---------------------|-------------|--------|----------------------|
| LPV DA | 270-1 250 (300-1) | | | |
| LNAV/VNAV DA | 434-1⅜ 414 (500-1⅜) | | | |
| LNAV MDA | 520-1 | 500 (500-1) | 520-1⅜ | 500 (500-1⅜) |
| C CIRCLING | 580-1 | 560 (600-1) | 580-1½ | 580-2 560 (600-2) |

AK, 26 DEC 2024 to 20 FEB 2025

AK, 26 DEC 2024 to 20 FEB 2025