

WAAS CH 93833 W35A	APP CRS 353°	Rwy Idg TDZE Apt Elev	3200 20 20
--	------------------------	-----------------------------	---------------------------------------

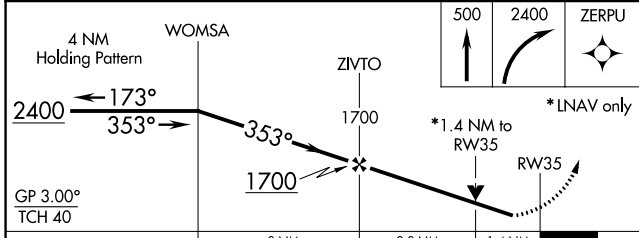
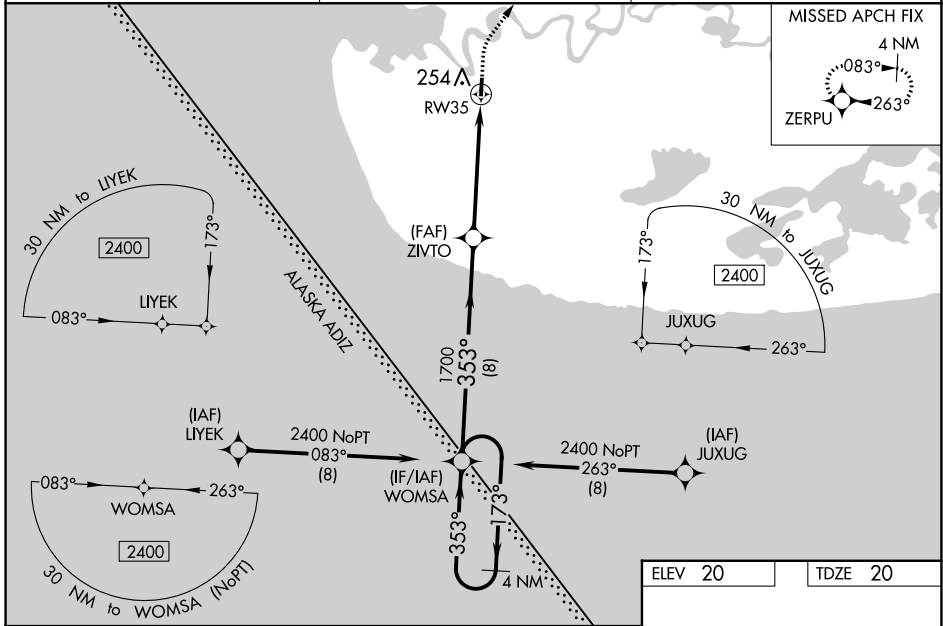
RNAV (GPS) RWY 35

KIPNUK (IIK) (PAKI)

⚠ Baro-VNAV NA when using Toksook Bay altimeter setting. For uncompensated Baro-VNAV systems, LNAV/VNAV NA below -20°C (-4°F) or above 54°C (130°F). Helicopter visibility reduction below 3/4 SM NA. DME/DME RNP-0.3 NA. Procedure NA at night. VDP NA when using Toksook Bay altimeter setting. When local altimeter setting is not received use Toksook Bay altimeter setting: increase LPV DA to 389 feet and visibility all Cats 1/4 SM. Increase LNAV/VNAV DA to 465 and visibility all Cats 3/8 SM. Increase all MDA 120 feet. Increase LNAV Cat C and D visibility to 1 1/4 SM, Circling Cat C to 2 SM, Cat D to 2 1/4 SM.

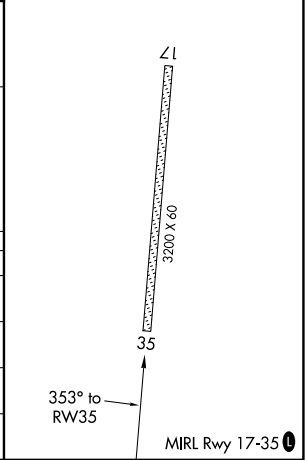
MISSED APPROACH: Climb to 500 then climbing right turn to 2400 direct ZERPU and hold.

AWOS-3P 118.325	ANCHORAGE CENTER 125.2 372.0	CTAF 122.7 0
---------------------------	--	-------------------------------



ELEV 20	TDZE 20
---------	---------

CATEGORY	A	B	C	D
LPV DA	270-1 250 (300-1)			
LNAV/VNAV DA	346-1 1/8 326 (400-1 1/8)			
LNAV MDA	520-1	500 (500-1)	520-1 3/8	500 (500-1 3/8)
C CIRCLING	580-1	560 (600-1)	580-1 1/2	580-2
			560 (600-1 1/2)	560 (600-2)



AK, 26 DEC 2024 to 20 FEB 2025

AK, 26 DEC 2024 to 20 FEB 2025