

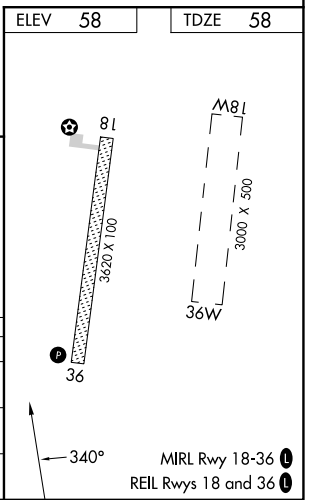
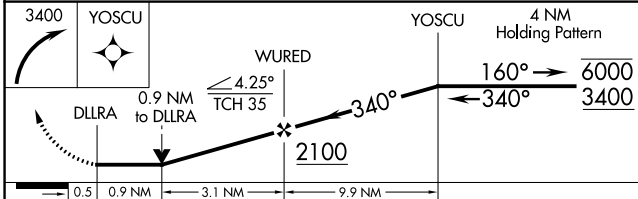
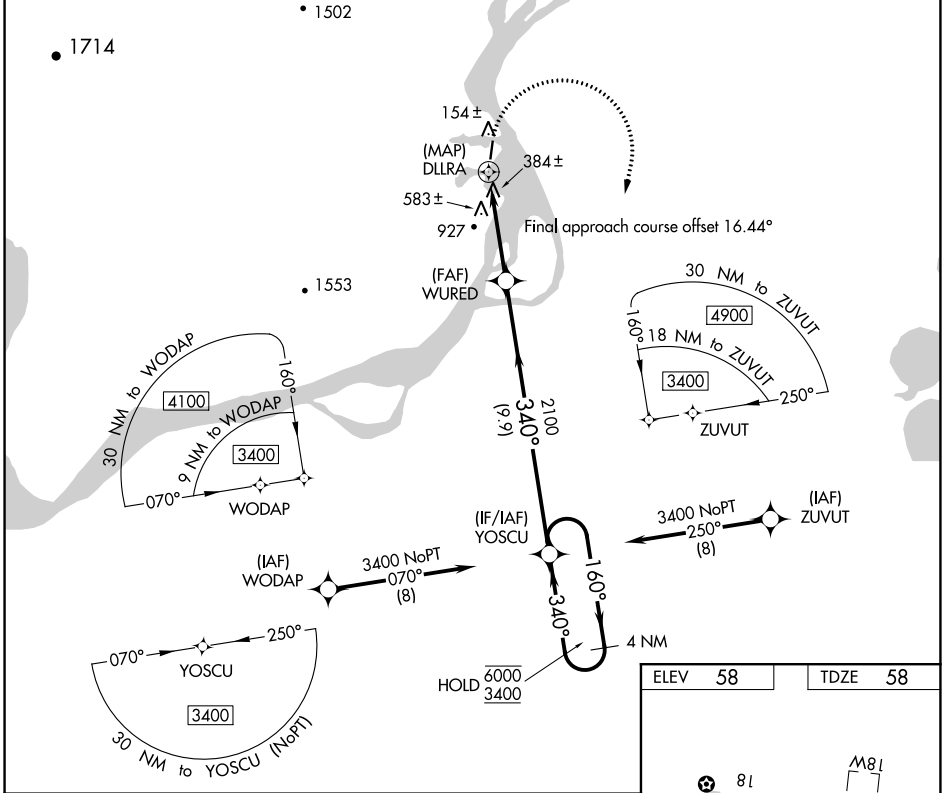
WAAS CH <b>93942</b> <b>W36A</b>	APP CRS <b>340°</b>	Rwy Idg <b>3620</b> TDZE <b>58</b> Apt Elev <b>58</b>
--	------------------------	---

# RNAV (GPS) RWY 36

RUSSIAN MISSION (RSH)(PARS)

RNP APCH. ▼ ▲ ❄️ -30°C	Circling Rwy 18 NA at night. Rwy 36 helicopter visibility reduction below ¾ SM NA.	MISSED APPROACH: Climbing right turn to 3400 direct YOSCU and hold.
---------------------------------	---	---

AWOS-3P <b>118.375</b>	ANCHORAGE CENTER <b>118.15 251.05</b>	CTAF <b>122.9</b>
---------------------------	--	----------------------



CATEGORY	A	B	C	D
LP MDA	700-1 642 (700-1)		NA	
LNAV MDA	840-1 782 (800-1)		NA	
<b>C</b> CIRCLING	840-1 782 (800-1)	840-1¼ 782 (800-1¼)	1120-3 1062 (1100-3)	1360-3 1302 (1400-3)

AK, 26 DEC 2024 to 20 FEB 2025

AK, 26 DEC 2024 to 20 FEB 2025