

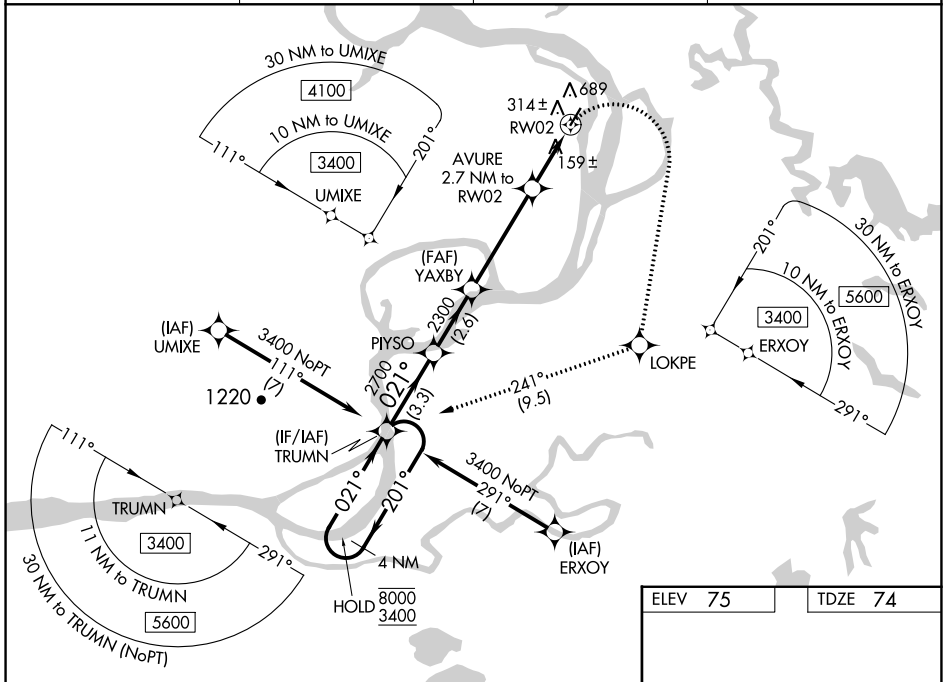
| | | |
|--|------------------------|---|
| WAAS CH 57947 W02A | APP CRS 021° | Rwy Idg 4000 TDZE 74 Apt Elev 75 |
|--|------------------------|---|

RNAV (GPS) RWY 2

HOLY CROSS (HCA) (PAHC)

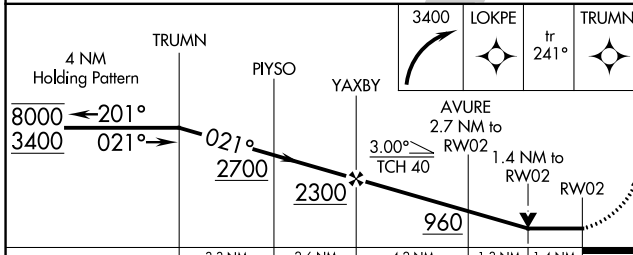
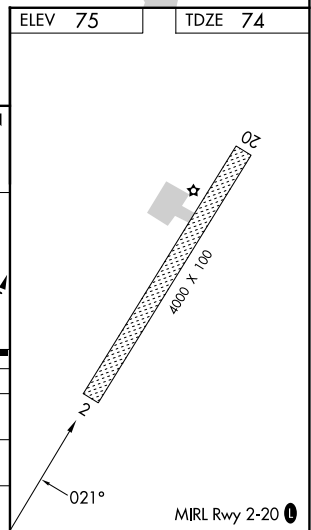
| | | |
|-----------------|---|--|
| RNP APCH - GPS. | <p>⚠ Circling Rwy 20 NA at night. Circling NA west of Rwy 2-20. Rwy 2 helicopter visibility reduction below $\frac{3}{4}$ SM NA. VDP NA when using Anvik altimeter setting. When local altimeter setting not received, use Anvik altimeter setting and increase all MDAs 120 feet and LNAV visibility Cat B, C and D $\frac{1}{2}$ SM, and LP visibility Cat C and D $\frac{3}{8}$ SM, and Circling all visibilities $\frac{1}{2}$ SM.</p> | <p>⚠ MISSED APPROACH: Climbing right turn to 3400 direct LOKPE and on track 241° to TRUMN and hold, continue climb-in-hold to 3400.</p> |
|-----------------|---|--|

| | | | |
|---------------------------|--|------------------------------|----------------------|
| AWOS-3P 118.325 | ANCHORAGE CENTER 118.15 251.05 | KENAI RADIO 122.45 | CTAF 122.8 |
|---------------------------|--|------------------------------|----------------------|



AK, 26 DEC 2024 to 20 FEB 2025

AK, 26 DEC 2024 to 20 FEB 2025



| CATEGORY | A | B | C | D |
|----------|-------|-------------|---------------------|----------------------------|
| LP MDA | 560-1 | 486 (500-1) | 560-1 $\frac{3}{8}$ | 486 (500-1 $\frac{3}{8}$) |
| LNAV MDA | 800-1 | 726 (800-1) | 800-2 | 726 (800-2) |
| CIRCLING | 800-1 | 725 (800-1) | 800-2 | 800-2 $\frac{1}{4}$ |
| | | | 725 (800-2) | 725 (800-2 $\frac{1}{4}$) |