

LOC/DME I-TTA 110.75 Chan 44 (Y)	APP CRS 029°	Rwy Idg 6501	TDZE 247
		Apt Elev 247	

ILS Y or LOC Y RWY 3

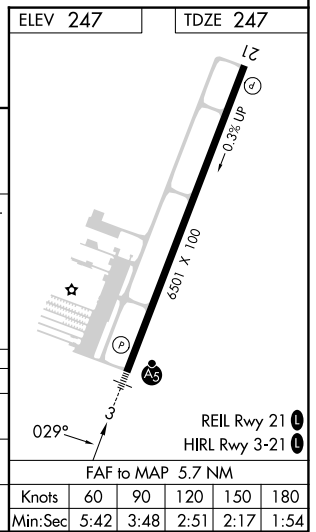
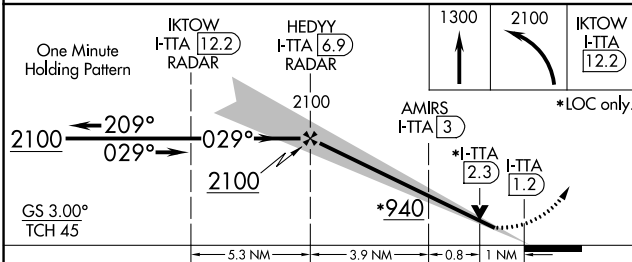
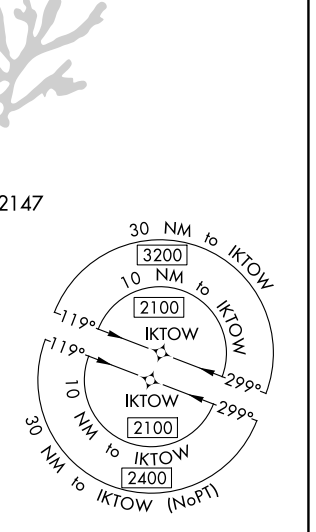
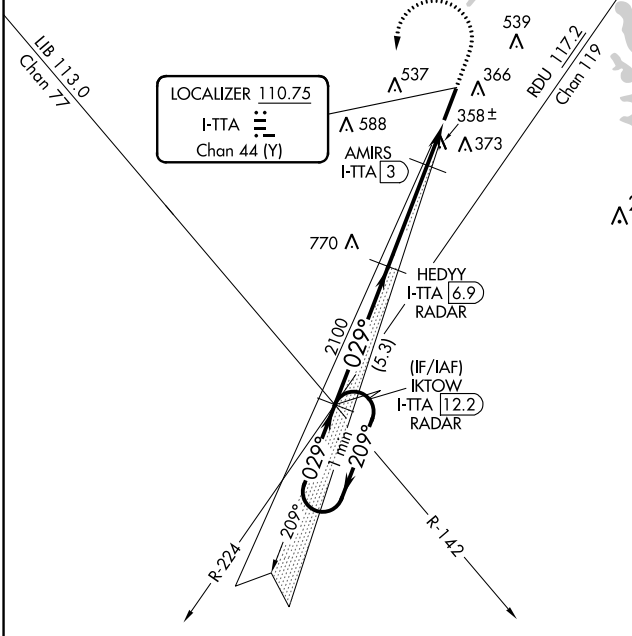
RALEIGH EXEC JETPORT AT SANFORD-LEE COUNTY (TTA)

RNAV 1-GPS required.
RNAV 1-GPS or RADAR required for procedure entry.

When local altimeter setting not received, use Raleigh/Durham altimeter setting: increase DA to 527 feet; increase all MDAs 100 feet and S-LOC 3 Cats C and D visibility to 1 SM and Circling Cat C visibility to 2 SM and Cat D to 2½ SM. For inop ALS, increase S-LOC 3 Cats C and D visibility to 1 SM. For inop ALS when using Raleigh/Durham altimeter setting, increase S-ILS 3 all Cats visibility to ¾ SM and increase S-LOC 3 Cats C and D visibility to 1½ SM. VDP NA when using Raleigh/Durham altimeter setting.

MALSR
MISSED APPROACH: Climb to 1300 then climbing left turn to 2100 direct IKTOW INT/I-TTA 12.2 DME/RADAR and hold.

AWOS-3 120.625	RALEIGH APP CON 125.3 353.675	UNICOM 123.075 (CTAF)	GC0 135.075
--------------------------	---	---------------------------------	-----------------------



CATEGORY	A	B	C	D
S-ILS 3		447-½	200 (200-½)	
S-LOC 3	620-½	373 (400-½)	620-5/8	373 (400-5/8)
CIRCLING	760-1 513 (600-1)	820-1 573 (600-1)	840-1½ 593 (600-1½)	960-2¼ 713 (800-2¼)

ILS Y or LOC Y RWY 3

SE-2, 26 DEC 2024 to 23 JAN 2025

SE-2, 26 DEC 2024 to 23 JAN 2025