

APP CRS <b>078°</b>	Rwy Idg TDZE Apt Elev	<b>3303</b> <b>-182</b> <b>-182</b>
------------------------	-----------------------------	---

# RNAV (GPS) RWY 8

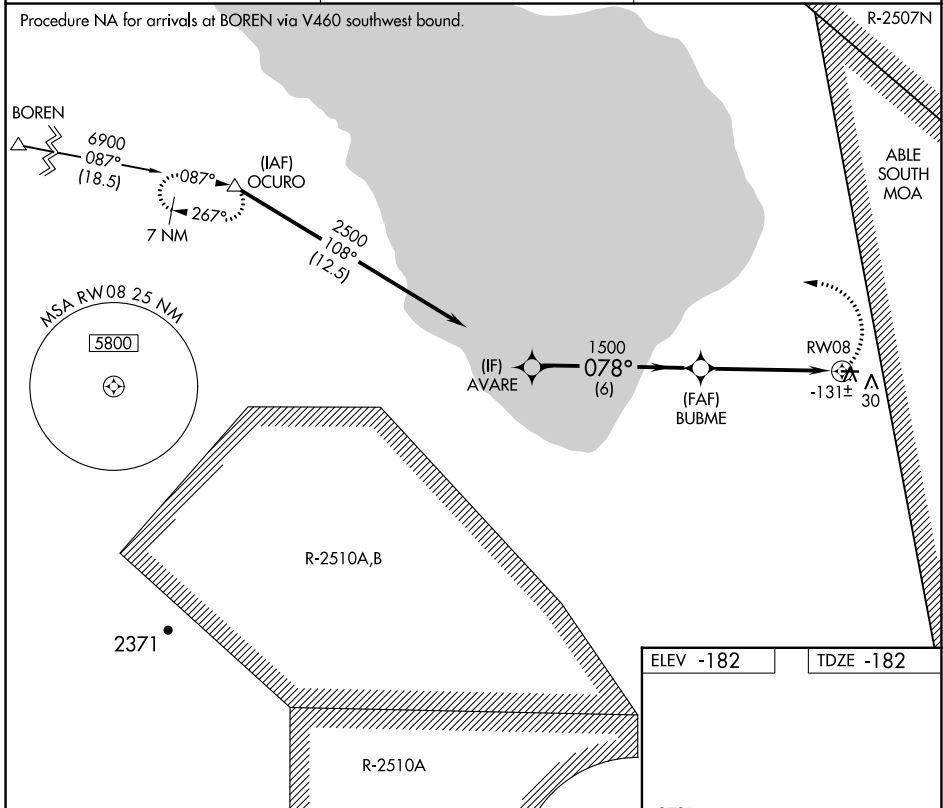
CLIFF HATFIELD MEML (CLR)

**▽** DME/DME RNP-0.3 NA. Procedure NA at night.  
**△ NA** Visibility reduction by helicopters NA.  
 Use Imperial altimeter setting, when not received, procedure NA.

MISSED APPROACH: Climbing left turn to 7300 direct OCURO and hold, continue climb-in-hold to 7300.

IPL ASOS <b>132.175</b>	YUMA CERAP <b>128.55 292.2</b>	CTAF <b>122.9</b>
----------------------------	-----------------------------------	----------------------

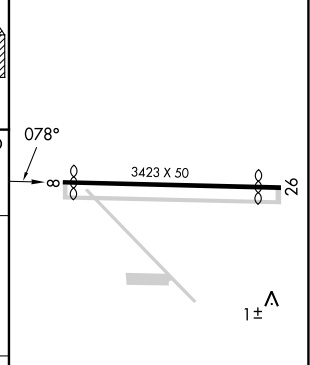
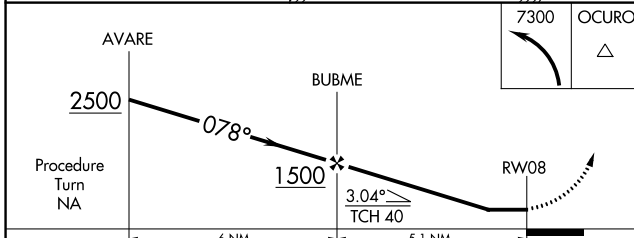
Procedure NA for arrivals at BOREN via V460 southwest bound.



SW-3, 26 DEC 2024 to 23 JAN 2025

SW-3, 26 DEC 2024 to 23 JAN 2025

ELEV -182	TDZE -182
-----------	-----------



CATEGORY	A	B	C	D
LNVA MDA	300-1	482 (500-1)	300-1¼ 482 (500-1¼)	NA
CIRCLING	440-1	622 (700-1)	440-1¼ 622 (700-1¼)	NA