

WAAS CH <b>45539</b> <b>W34A</b>	APP CRS <b>345°</b>	Rwy Idg TDZE Apt Elev	<b>7600</b> <b>5370</b> <b>5433</b>
--	------------------------	-----------------------------	---

# RNAV (GPS) RWY 34

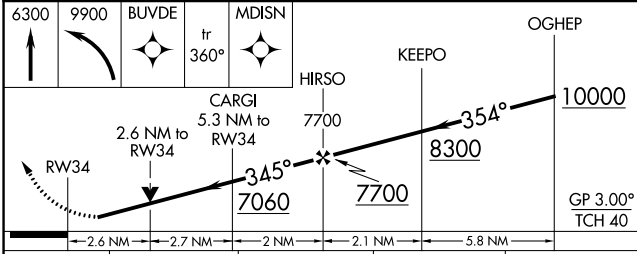
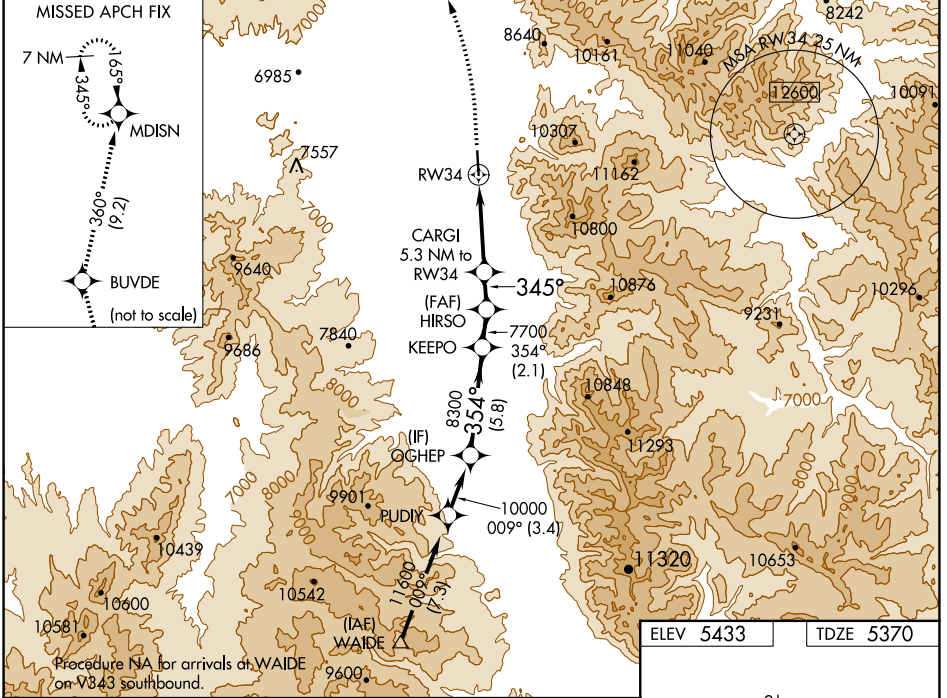
ENNIS BIG SKY (EKS)

RNP APCH-GPS.

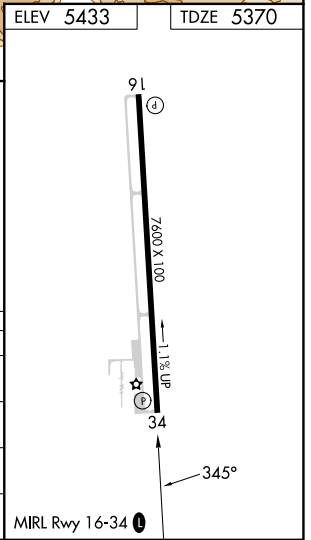
**MISSED APCH-GPS.**  
 Circling NA east of Rwy 16-34. Rwy 34 helicopter visibility reduction below 3/4 SM NA. Baro-VNAV NA.

**MISSED APPROACH:** Climb to 6300, then climbing left turn to 9900 direct BUUDE and on track 360° to MDISN and hold.

AWOS-3P <b>119.85</b>	BIG SKY APP CON ★ <b>118.975 226.675</b>	UNICOM <b>122.8 (CTAF) 0</b>
--------------------------	---	---------------------------------



CATEGORY	A	B	C	D
LPV DA	5645-1 275 (300-1)			
LNAV/VNAV DA	5952-1 3/4 582 (600-1 3/4)			
LNAV MDA	6220-1 850 (800-1)	6220-1 1/4 850 (800-1 1/4)	6220-2 1/2	850 (800-2 1/2)
CIRCLING	6220-1 787 (800-1)	6220-1 1/4 787 (800-1 1/4)	6220-2 1/2	787 (800-2 1/2)



NW-1, 26 DEC 2024 to 23 JAN 2025

NW-1, 26 DEC 2024 to 23 JAN 2025