

APP CRS 319°	Rwy Idg 3400
	TDZE 1226
	Apt Elev 1228

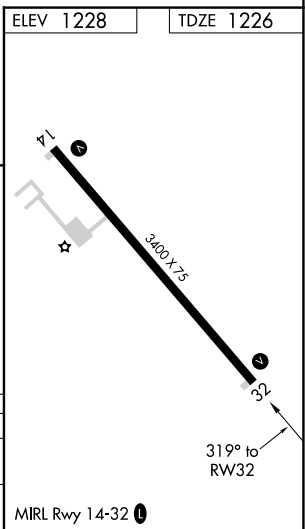
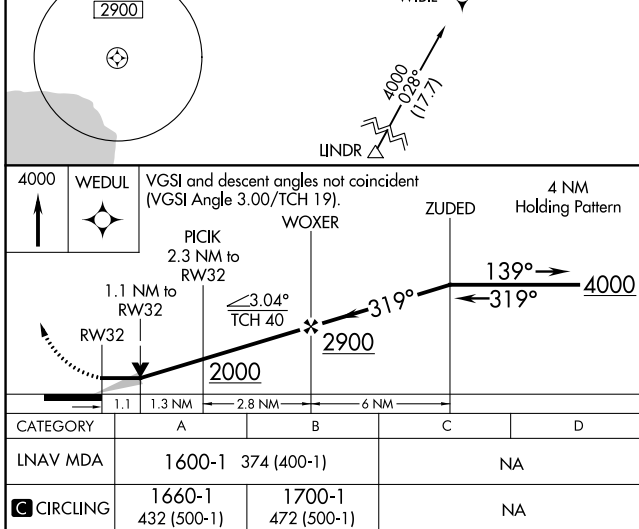
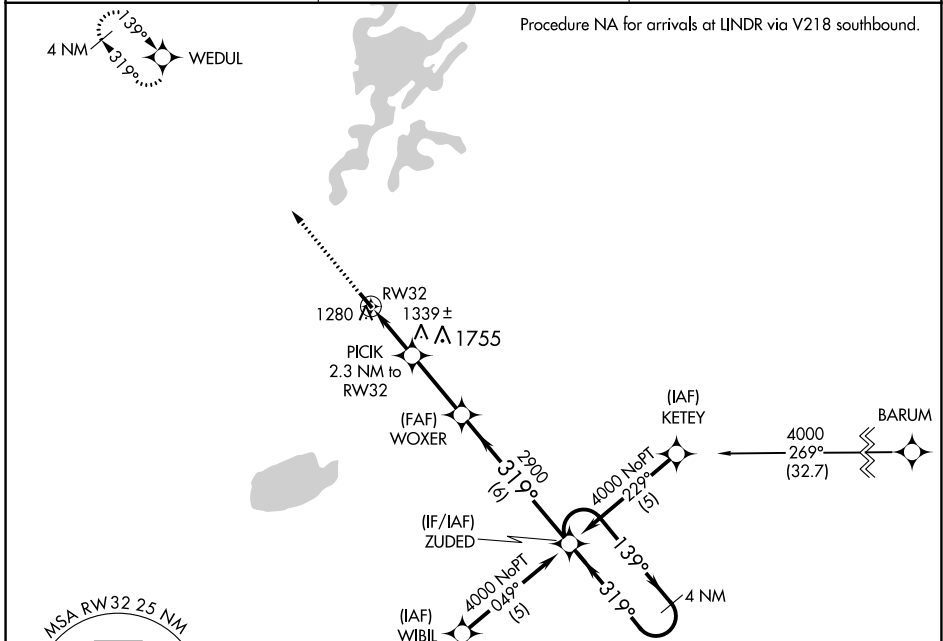
RNAV (GPS) RWY 32

ISEDOR IVERSON (HZZX)

▼ DME/DME RNP-0.3 NA.
When local altimeter setting not received, use Aitkin altimeter setting and increase all MDAs 40 feet.
VDP NA when using Aitkin altimeter setting.

MISSED APPROACH: Climb to 4000 direct WEDUL and hold.

AWOS-3 119.575	MINNEAPOLIS CENTER 127.9 281.45	CTAF 122.9 0
--------------------------	---	------------------------



NC-1, 26 DEC 2024 to 23 JAN 2025

NC-1, 26 DEC 2024 to 23 JAN 2025