

| | | | |
|--|------------------------|-----------------------------|---|
| WAAS CH 58221 W35A | APP CRS 348° | Rwy Idg TDZE Apt Elev | 6300 5022 5022 |
|--|------------------------|-----------------------------|---|

RNAV (GPS) RWY 35

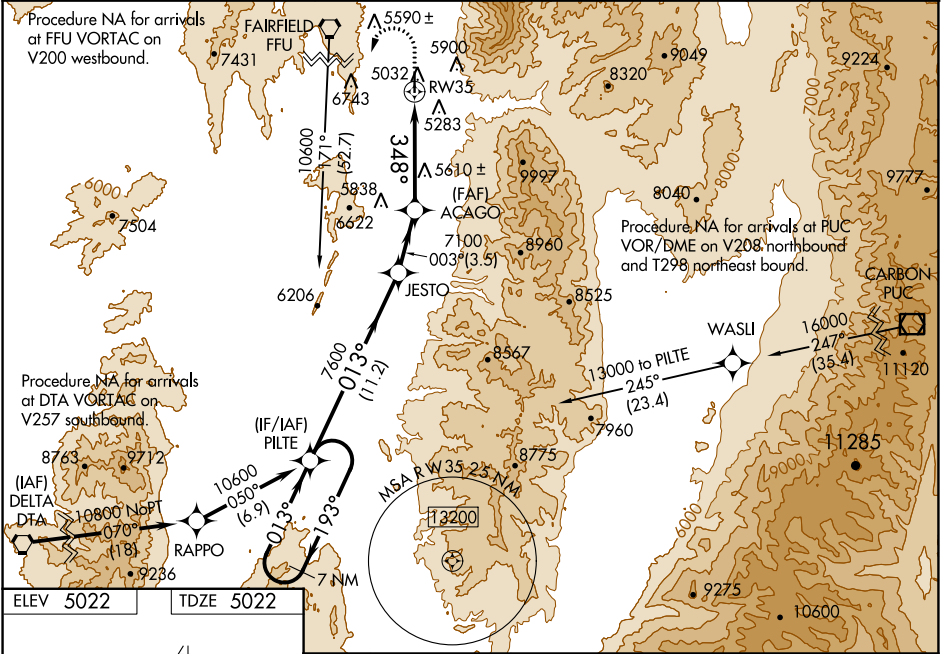
NEPHI MUNI (U14)

RNP APCH - GPS.

NA Baro-VNAV NA when using Provo altimeter setting. For uncompensated Baro-VNAV systems, LNAV/VNAV NA below -24°C or above 12°C. Circling NA for Cat C east of Rwy 17 and 35. Rwy 35 helicopter visibility reduction below ¼ SM NA. VDP NA with Provo altimeter setting. When local altimeter setting not received, use Provo altimeter setting: increase LPV DA to 5416 feet and visibility all Cats ½ SM; increase LNAV/VNAV DA to 5740 feet and visibility all Cats ½ SM; increase all MDAs 160 feet and LNAV visibility Cats B/C/D and Circling visibility Cats A/B ½ SM.

MISSED APPROACH: Climb to 8200 then climbing left turn to 10600 direct PILTE and hold.

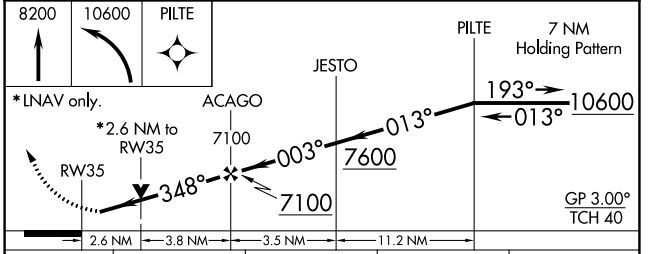
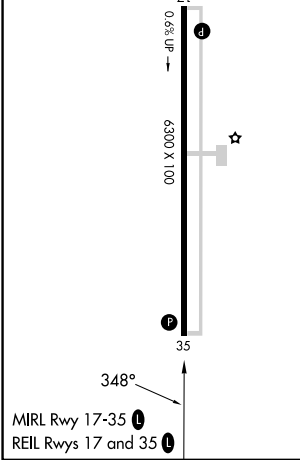
| | | |
|--------------------------|--|-----------------------------------|
| AWOS-3 118.275 | SALT LAKE CENTER 127.825 239.025 | UNICOM 123.075 (CTAF) 0 |
|--------------------------|--|-----------------------------------|



SW-4, 26 DEC 2024 to 23 JAN 2025

SW-4, 26 DEC 2024 to 23 JAN 2025

| | |
|-----------|-----------|
| ELEV 5022 | TDZE 5022 |
|-----------|-----------|



| CATEGORY | A | B | C | D |
|--------------|---------|---------------|-------------------------|---------------|
| LPV DA | | 5272-7/8 | 250 (300-7/8) | |
| LNAV/VNAV DA | | 5596-2 | 574 (600-2) | |
| LNAV MDA | 5940-1¼ | 918 (1000-1¼) | 5940-2½ | 918 (1000-2½) |
| CIRCLING | 5900-1¼ | 878 (900-1¼) | 6920-3 1898 (1900-3) | NA |