

|             |          |             |
|-------------|----------|-------------|
| APP CRS     | Rwy Idg  | <b>5032</b> |
| <b>305°</b> | TDZE     | <b>5723</b> |
|             | Apt Elev | <b>5737</b> |

# RNAV (GPS) RWY 31

ESCALANTE MUNI (1L7)

RNP APCH - GPS.

▼ Baro-VNAV NA. Rwy 31 helicopter visibility reduction below ¾ SM NA. Circling NA northeast of Rwy 13-31. Procedure NA at night. Use Page altimeter setting.

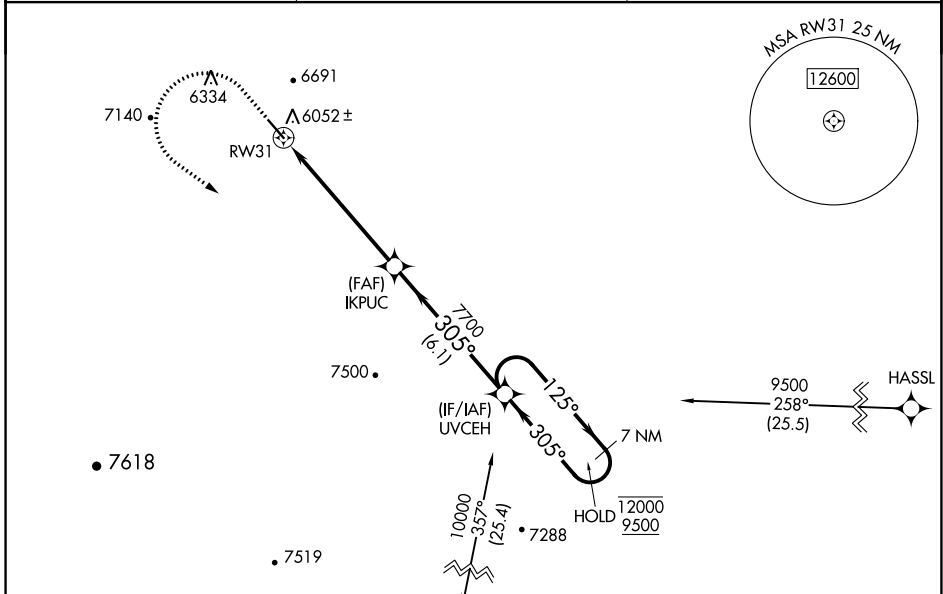
▲ NA

MISSED APPROACH: Climb to 7600 then climbing left turn to 9500 direct UVCEH and hold, continue climb-in-hold to 9500.  
 \*Missed approach requires minimum climb of 328 feet per NM to 8000.  
 #Missed approach requires minimum climb of 306 feet per NM to 7900.

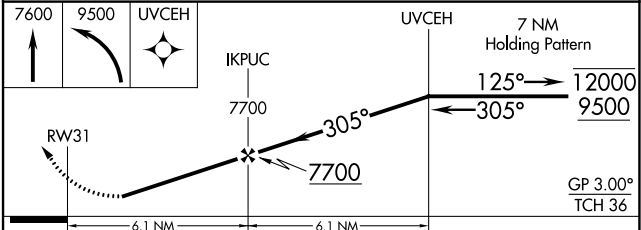
PGA ASOS  
**120.625**

SALT LAKE CENTER  
**133.6 269.25**

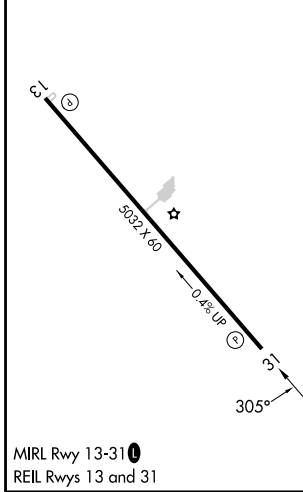
UNICOM  
**122.8 (CTAF) 0**



|           |           |
|-----------|-----------|
| ELEV 5737 | TDZE 5723 |
|-----------|-----------|



| CATEGORY      | A                         | B                         | C | D  |
|---------------|---------------------------|---------------------------|---|----|
| LNAV/VNAV DA* | 6534-2½                   | 811 (800-2½)              |   | NA |
| LNAV MDA#     | 6720-1¼<br>997 (1000-1¼)  | 6720-1½<br>997 (1000-1½)  |   | NA |
| LNAV/VNAV DA  | 7169-6                    | 1446 (1500-6)             |   | NA |
| LNAV MDA      | 6960-1¼<br>1237 (1300-1¼) | 6960-1½<br>1237 (1300-1½) |   | NA |
| CIRCLING      | 6960-1¼<br>1223 (1300-1¼) | 6960-1½<br>1223 (1300-1½) |   | NA |



SW-4, 26 DEC 2024 to 23 JAN 2025

SW-4, 26 DEC 2024 to 23 JAN 2025