

WAAS CH 86831 W27A	APP CRS 266°	Rwy Idg TDZE Apt Elev	4712 6037 6056
--	------------------------	-----------------------------	---

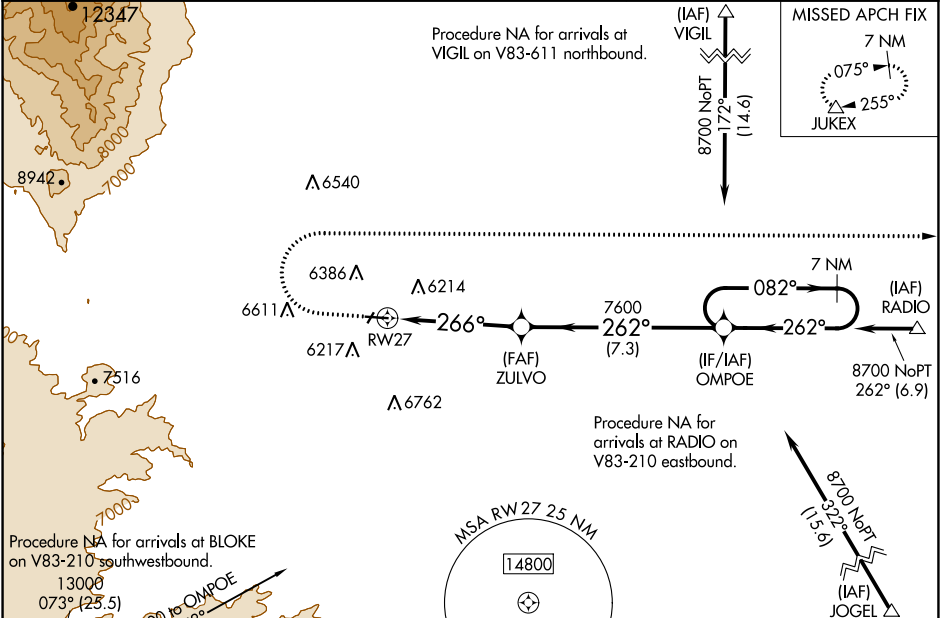
RNAV (GPS) RWY 27

SPANISH PEAKS AIRFIELD (4V1)

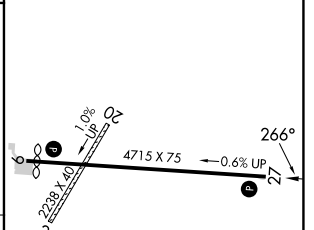
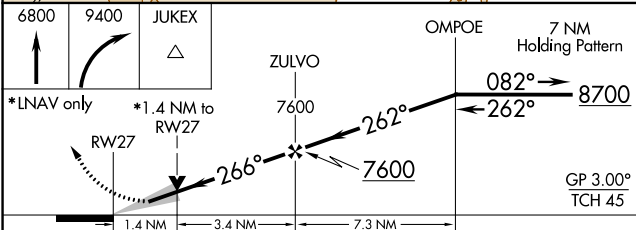
NA For uncompensated Baro-VNAV systems, LNAV/VNAV NA below -26°C (-14°F) or above 48°C (118°F). DME/DME RNP-0.3 NA. When local altimeter setting not received, use Trinidad altimeter setting and increase all DA 119 feet and all MDA 120 feet; increase LPV all Cats visibility ¼ mile, increase LNAV/VNAV all Cats and LNAV Cats C/D visibility ⅜ mile. Baro-VNAV and VDP NA when using Trinidad altimeter setting.

MISSED APPROACH: Climb to 6800 then climbing right turn to 9400 direct JUKEK and hold.

AWOS-3PT 123.6	DENVER CENTER 128.375 379.95	UNICOM 122.8 (CTAF) 0
--------------------------	--	---------------------------------



ELEV 6056	D TDZE 6037
-----------	--------------------



CATEGORY	A	B	C	D
LPV DA	6287-1 250 (300-1)			
LNAV/VNAV DA	6525-1⅓ 488 (500-1⅓)			
LNAV MDA	6520-1 483 (500-1)	6520-1⅓ 483 (500-1⅓)		
C CIRCLING	6720-1 664 (700-1)	7080-3 1024 (1100-3)	7120-3 1064 (1100-3)	

MIRL Rwy 9-27 **0**

SW-1, 26 DEC 2024 to 23 JAN 2025

SW-1, 26 DEC 2024 to 23 JAN 2025