

| | | |
|-------------|----------|-------------|
| APP CRS | Rwy Idg | 5510 |
| 175° | TDZE | 4041 |
| | Apt Elev | 4044 |

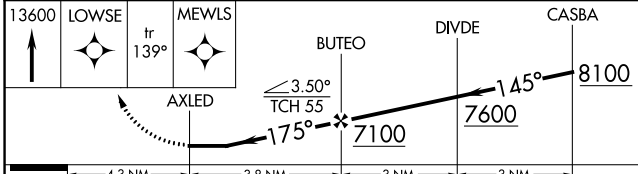
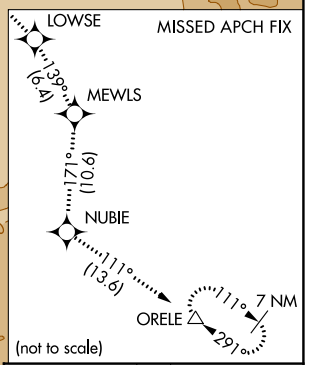
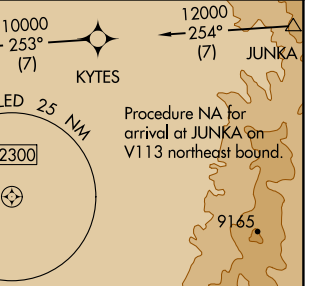
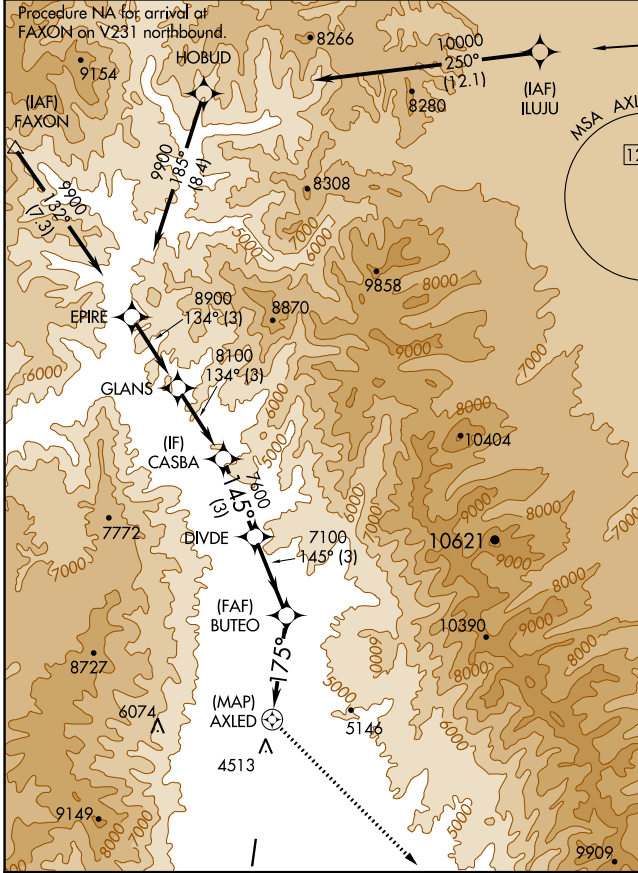
RNAV (GPS) RWY 17

LEMHI COUNTY (SMN)

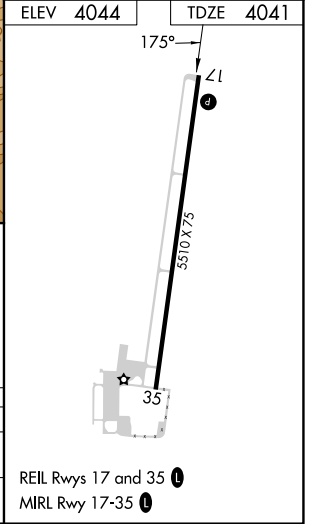
⚠ NA
⚠ -13°C
 DME/DME RNP-0.3 NA. Night landing: Rwy 35 NA.
 Circling NA for Cats B and C east of Rwy 17-35.
 Helicopter visibility reduction below 3/4 SM NA.

MISSED APPROACH: Climb to 13600 direct LOWSE and track 139° to MEWLS and track 171° to NUBIE and track 111° to ORELE and hold, continue climb-in-hold to 13600.

| | | |
|----------------------------|--|-------------------------------|
| AWOS-3PT 135.075 | SALT LAKE CENTER 132.4 338.3 | UNICOM 122.8 (CTAF) |
|----------------------------|--|-------------------------------|



| | | | | |
|-------------------|----------------------|---|----------------------|----|
| CATEGORY | A | B | C | D |
| LNVA MDA | 5740-5 1699 (1700-5) | | | NA |
| C CIRCLING | 5740-5 1696 (1700-5) | | 6180-5 2136 (2200-5) | NA |



NW-1, 26 DEC 2024 to 23 JAN 2025

NW-1, 26 DEC 2024 to 23 JAN 2025