

WAAS CH 48844 W36A	APP CRS 358°	Rwy Idg TDZE Apt Elev	3400 1131 1131
--	------------------------	-----------------------------	---

RNAV (GPS) RWY 36

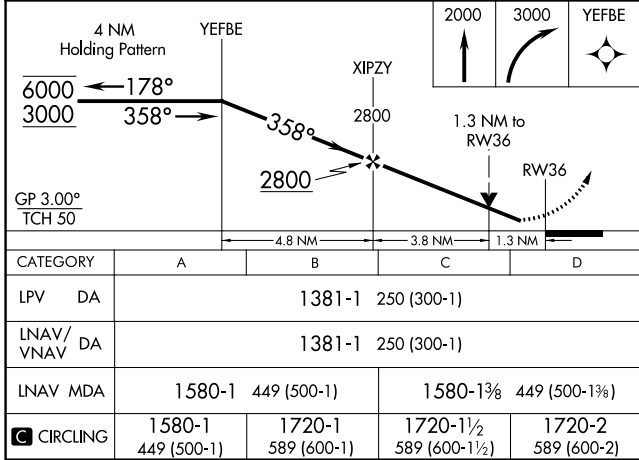
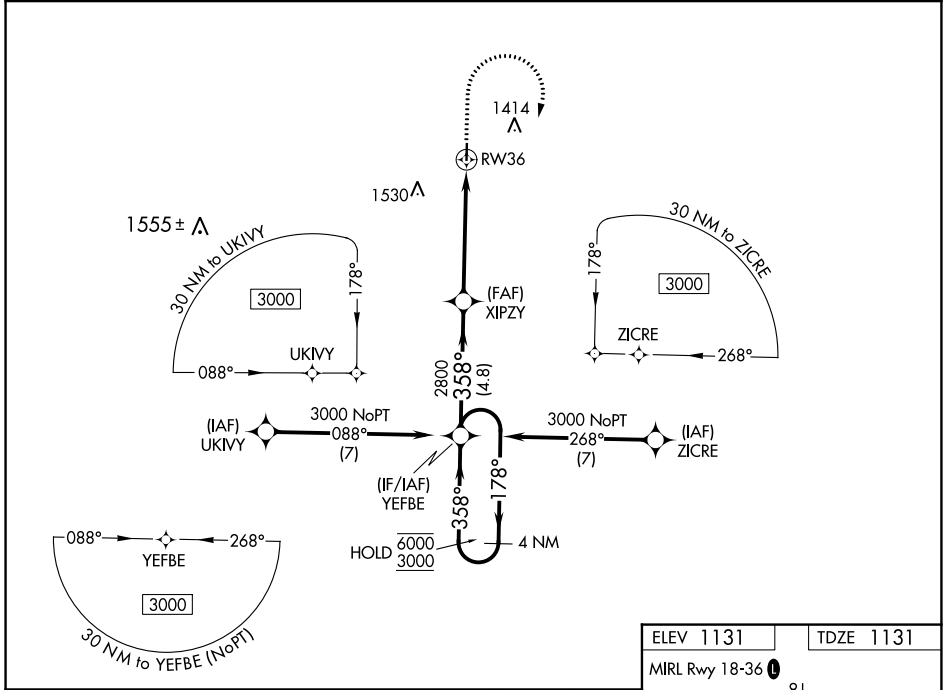
LAMONI MUNI (LWD)

RNP APCH-GPS.

⚠ Rwy 36 helicopter visibility reduction below 3/4 SM NA. For uncompensated Baro-VNAV systems, LNAV/VNAV NA below -21°C or above 54°C. Circling NA west of Rwy 18-36.

MISSED APPROACH: Climb to 2000, then climbing right turn to 3000 direct YEFBE and hold.

ASOS 120.0	MINNEAPOLIS CENTER 125.65 306.95	CTAF 122.9
----------------------	--	----------------------



ELEV 1131	TDZE 1131						
MIRL Rwy 18-36							
<table border="1"> <tr> <td>2000</td> <td>3000</td> <td>YEFBE</td> </tr> <tr> <td>↑</td> <td>↷</td> <td>✧</td> </tr> </table>		2000	3000	YEFBE	↑	↷	✧
2000	3000	YEFBE					
↑	↷	✧					
<table border="1"> <tr> <td>4.8 NM</td> <td>3.8 NM</td> <td>1.3 NM</td> </tr> </table>		4.8 NM	3.8 NM	1.3 NM			
4.8 NM	3.8 NM	1.3 NM					
CATEGORY	A	B	C	D			
LPV DA	1381-1		250 (300-1)				
LNAV/VNAV DA	1381-1		250 (300-1)				
LNAV MDA	1580-1	449 (500-1)	1580-1 3/8	449 (500-1 3/8)			
C CIRCLING	1580-1 449 (500-1)	1720-1 589 (600-1)	1720-1 1/2 589 (600-1 1/2)	1720-2 589 (600-2)			

NC-3, 26 DEC 2024 to 23 JAN 2025

NC-3, 26 DEC 2024 to 23 JAN 2025