

| | | |
|--|------------------------|---|
| WAAS CH 56212 W17A | APP CRS 167° | Rwy Idg 8500 TDZE 194 Apt Elev 194 |
|--|------------------------|---|

RNAV (GPS) RWY 17

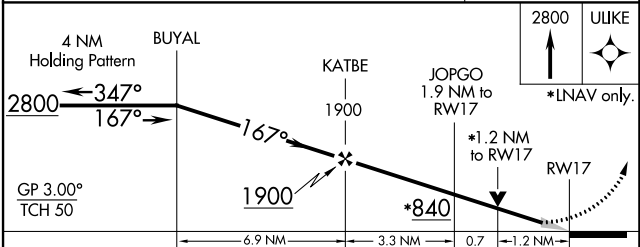
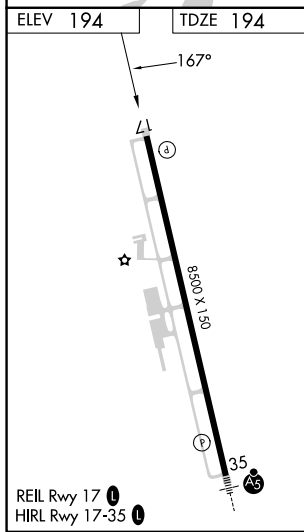
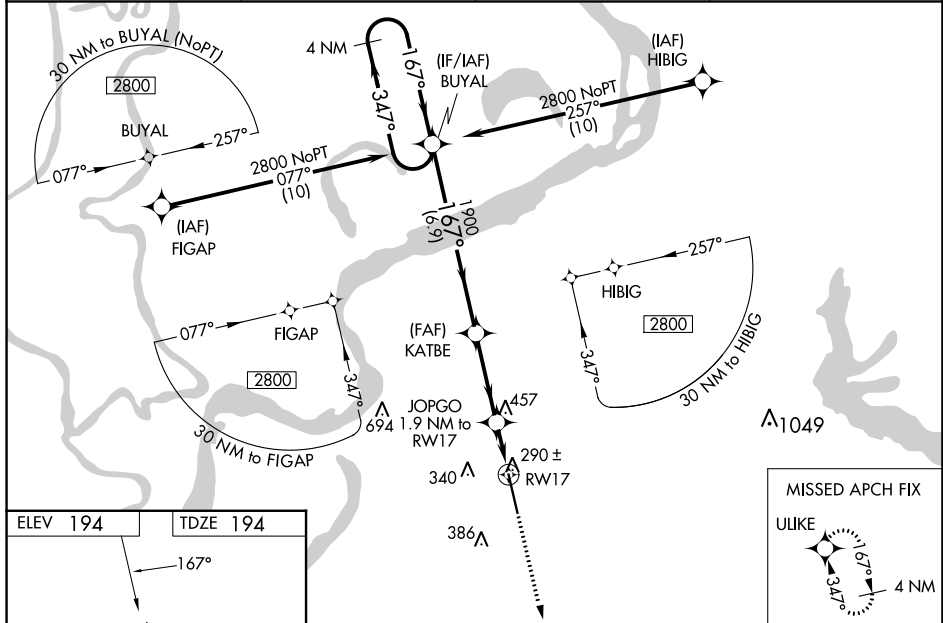
TUNICA MUNI (UTA)

RNP APCH.

⚠ For uncompensated Baro-VNAV systems, LNAV/VNAV NA below -15°C (5°F) or above 42°C (107°F). For inop ALS, increase LNAV/VNAV visibility all Cats to ¾ SM, and LNAV Cats C, D visibility to 1¾ SM. Baro VNAV and VDP NA when using Memphis altimeter setting. When local altimeter setting not received, use Memphis altimeter setting and increase LPV DA to 480, LNAV/VNAV DA to 557, and all MDA 100 feet, increase LNAV/VNAV visibility all Cats to 1 SM, and Circling Cat C visibility to 1¾ SM. For inop ALS when using Memphis altimeter setting, increase LPV all Cats visibility to ¾ SM, LNAV/VNAV all Cats visibility to 1 SM, LNAV Cats C/D visibility to 1¾ SM.

MISSED APPROACH:
Climb to 2800 direct
ULIKE and hold.

| | | | |
|--------------------------|---------------------------------------|--------------------------|---------------------------------|
| AWOS-3 118.075 | MEMPHIS APP CON 119.1 291.6 | CLNC DEL 118.9 | UNICOM 123.0 (CTAF) 0 |
|--------------------------|---------------------------------------|--------------------------|---------------------------------|



| CATEGORY | DISTANCE | | | |
|--------------|-------------|-------------|--------------|--------------|
| | A | B | C | D |
| LPV DA | 394-¾ | 200 (200-¾) | | |
| LNAV/VNAV DA | 471-¾ | 277 (300-¾) | | |
| LNAV MDA | 640-¾ | 446 (500-¾) | 640-1½ | 446 (500-1½) |
| CIRCLING | 680-1 | 740-1 | 760-1½ | 760-2 |
| | 486 (500-1) | 546 (600-1) | 566 (600-1½) | 566 (600-2) |

SC-4, 26 DEC 2024 to 23 JAN 2025

SC-4, 26 DEC 2024 to 23 JAN 2025