

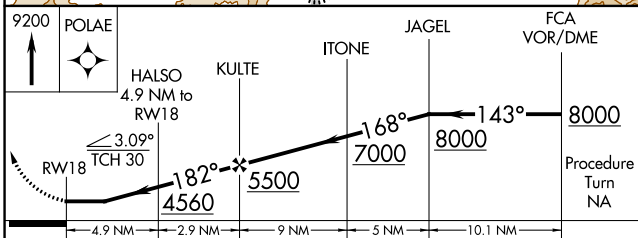
APP CRS	Rwy Idg	4195
182°	TDZE	2941
	Apt Elev	2941

RNAV (GPS) RWY 18

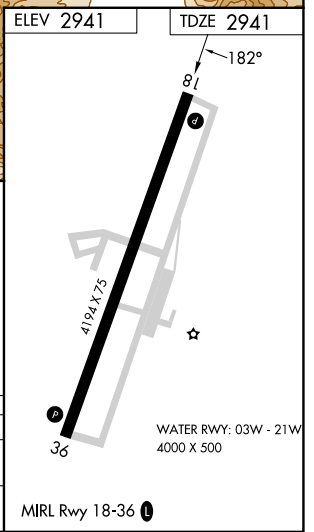
POLSON (8S1)

<p>NA Procedure NA at night. DME/DME RNP-0.3 NA. Use Glacier Park Intl altimeter setting. Helicopter visibility reduction below 1 SM NA.</p>	<p>MISSED APPROACH: Climb to 9200 direct POLAE and hold.</p>
---	--

GPI ASOS 132.625	SALT LAKE CENTER 127.075 244.875	UNICOM 122.8 (CTAF) 0
----------------------------	--	---------------------------------



CATEGORY	A	B	C	D
LNAV MDA	4480-1¼ 1539 (1600-1¼)	4480-1½ 1539 (1600-1½)	NA	NA
CIRCLING	4480-1¼ 1539 (1600-1¼)	4480-1½ 1539 (1600-1½)	NA	NA



NW-1, 26 DEC 2024 to 23 JAN 2025

NW-1, 26 DEC 2024 to 23 JAN 2025