

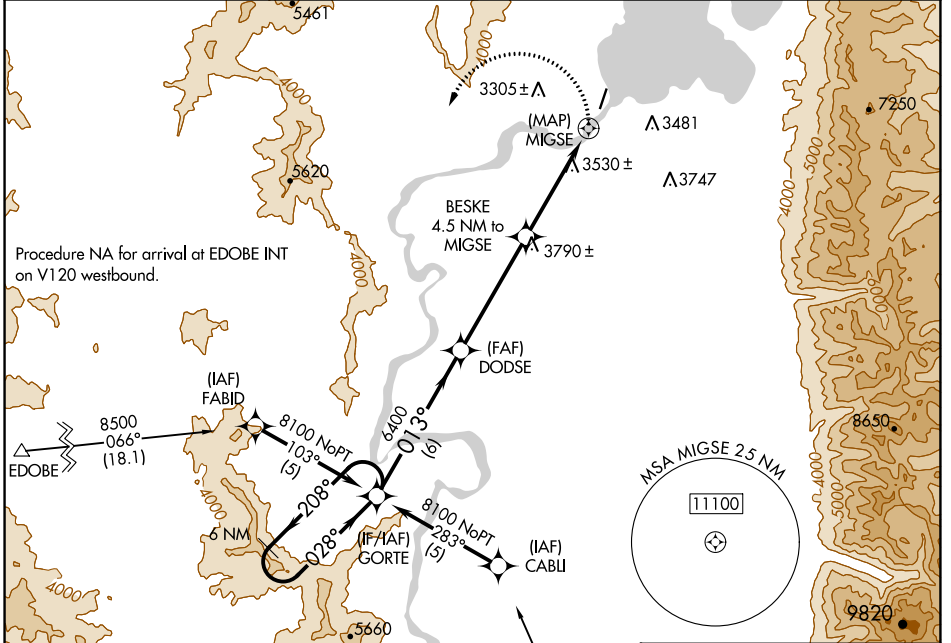
APP CRS	Rwy Idg	4195
013°	TDZE	2941
	Apt Elev	2941

RNAV (GPS) RWY 36

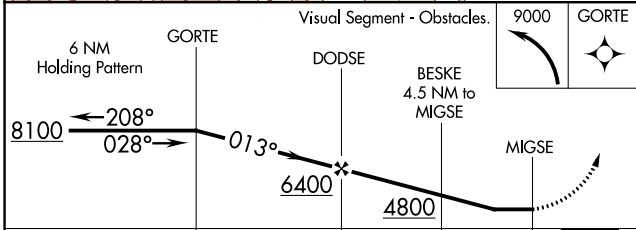
POLSON (8S1)

<p>NA</p> <p>Procedure NA at night. DME/DME RNP-0.3 NA. Use Glacier Park Inlt altimeter setting. Helicopter visibility reduction below 1 SM NA.</p>	<p>MISSED APPROACH: Climbing left turn to 9000 direct GORTE WP and hold.</p>
--	---

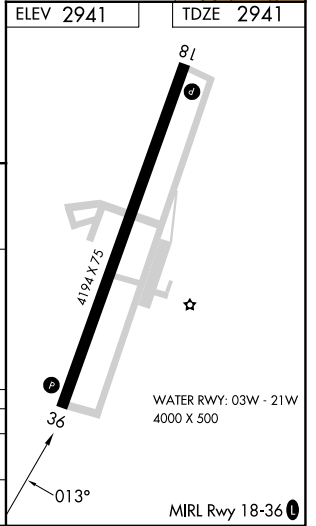
<p>GPI ASOS</p> <p>132.625</p>	<p>SALT LAKE CENTER</p> <p>127.075 244.875</p>	<p>UNICOM</p> <p>122.8 (CTAF) 0</p>
---------------------------------------	---	--



ELEV 2941	TDZE 2941
-----------	-----------



CATEGORY	A	B	C	D
LNAV	4340-1¼ 1399 (1400-1¼)	4340-1½ 1399 (1400-1½)	NA	NA
CIRCLING	4340-1¼ 1399 (1400-1¼)	4340-1½ 1399 (1400-1½)	NA	NA



NW-1, 26 DEC 2024 to 23 JAN 2025

NW-1, 26 DEC 2024 to 23 JAN 2025