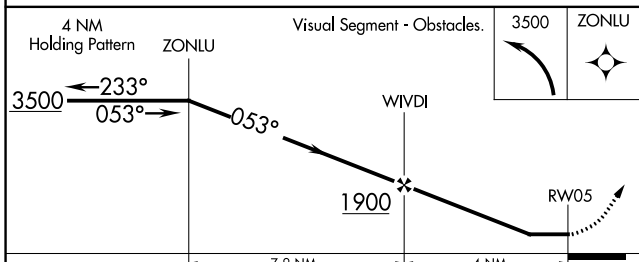
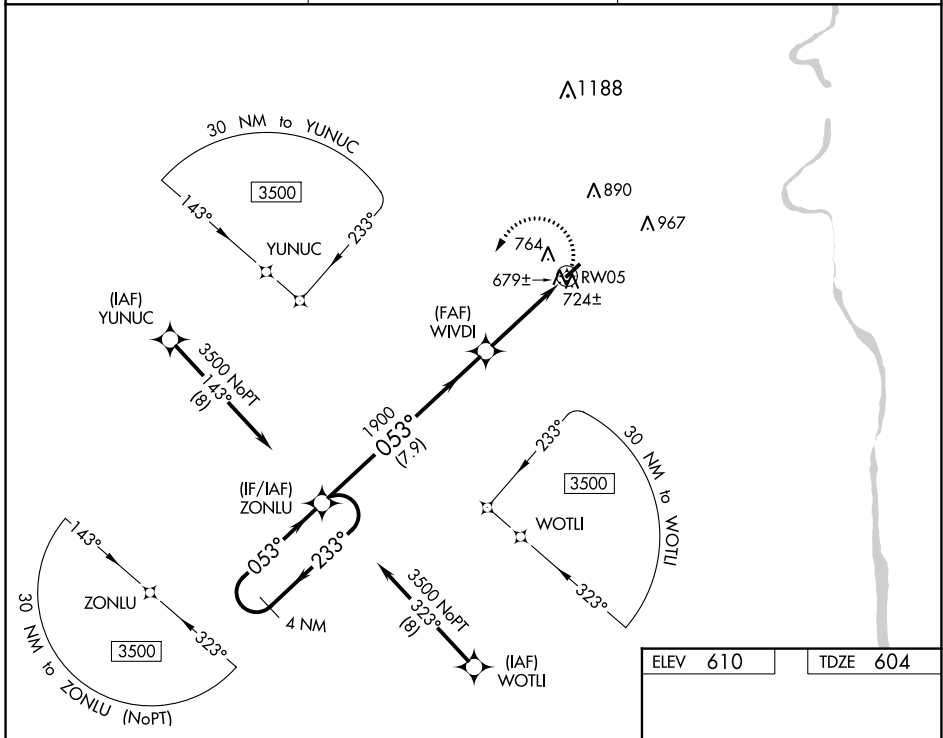


WAAS CH 97335 W05A	APP CRS 053°	Rwy Idg 3508 TDZE 604 Apt Elev 610
--	------------------------	---

RNAV (GPS) RWY 5

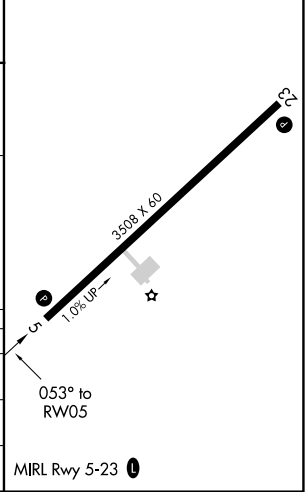
UNION COUNTY, TROY SHELTON FLD (35A)

RNP APCH.		MISSED APPROACH: Climbing left turn to 3500 direct ZONLU and hold.
AWOS-3PT 119.45	GREER APP CON ★ 119.4 350.2	UNICOM 122.7 (CTAF) 0



ELEV 610	TDZE 604
----------	----------

CATEGORY	A	B	C	D
LP MDA	1000-1	396 (400-1)		NA
LNAV MDA	1040-1	436 (500-1)		NA
C CIRCLING	1180-1	570 (600-1)		NA



SE-2, 26 DEC 2024 to 23 JAN 2025

SE-2, 26 DEC 2024 to 23 JAN 2025