

APP CRS	Rwy Idg	<b>4000</b>
<b>030°</b>	TDZE	<b>360</b>
	Apt Elev	<b>364</b>

# RNAV (GPS) RWY 3

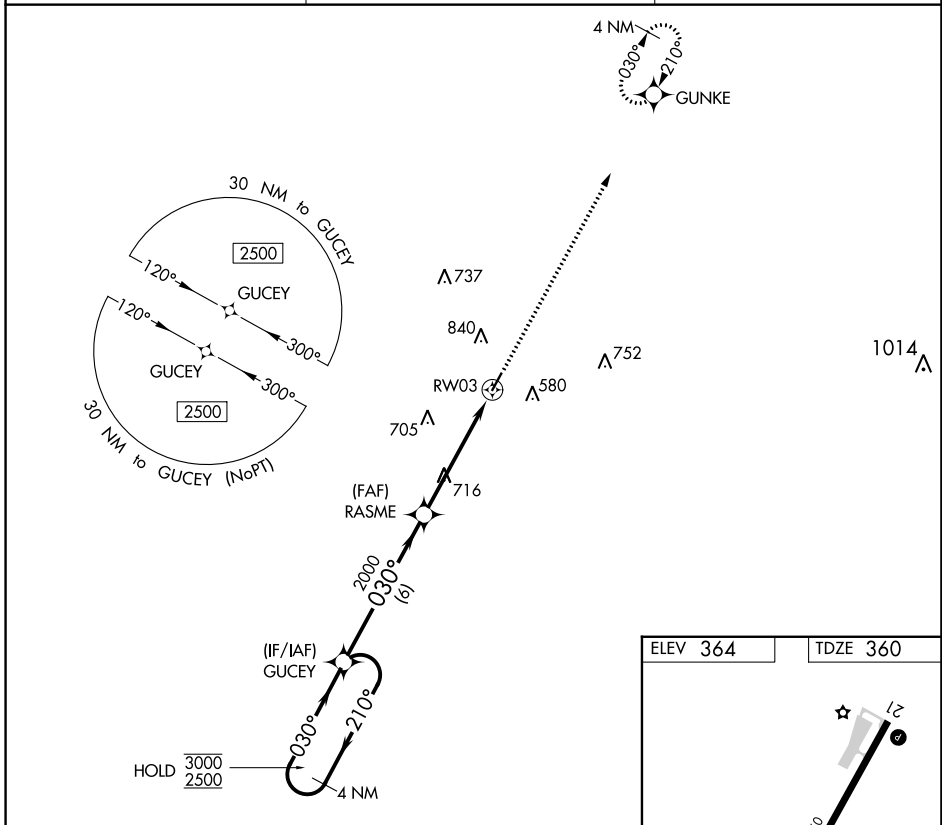
WINONA-MONTGOMERY COUNTY (5A6)

RNP APCH - GPS.

**▽** Procedure NA at night. Rwy 3 helicopter visibility reduction below 1 SM NA.  
**▲** NA When local altimeter setting not received, use GNF altimeter setting.

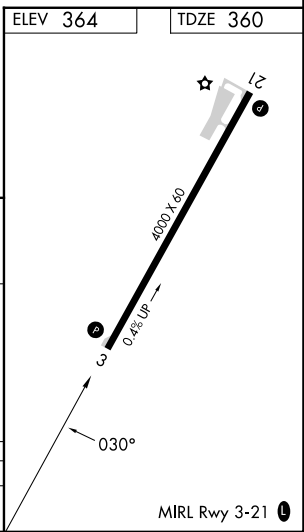
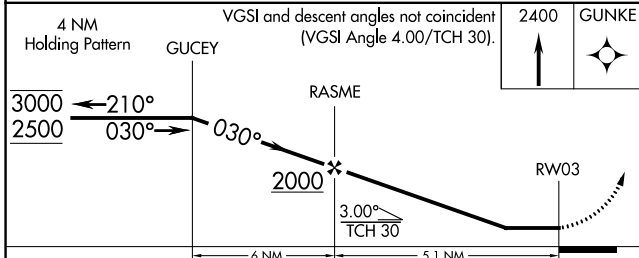
MISSED APPROACH: Climb to 2400 direct GUNKE and hold.

AWOS-3PT <b>120.175</b>	MEMPHIS CENTER <b>128.5 279.55</b>	CTAF <b>122.9</b>
----------------------------	---------------------------------------	----------------------



SC-4, 26 DEC 2024 to 23 JAN 2025

SC-4, 26 DEC 2024 to 23 JAN 2025



CATEGORY	A	B	C	D
LNNAV MDA	1040-1	680 (700-1)	1040-2 680 (700-2)	NA