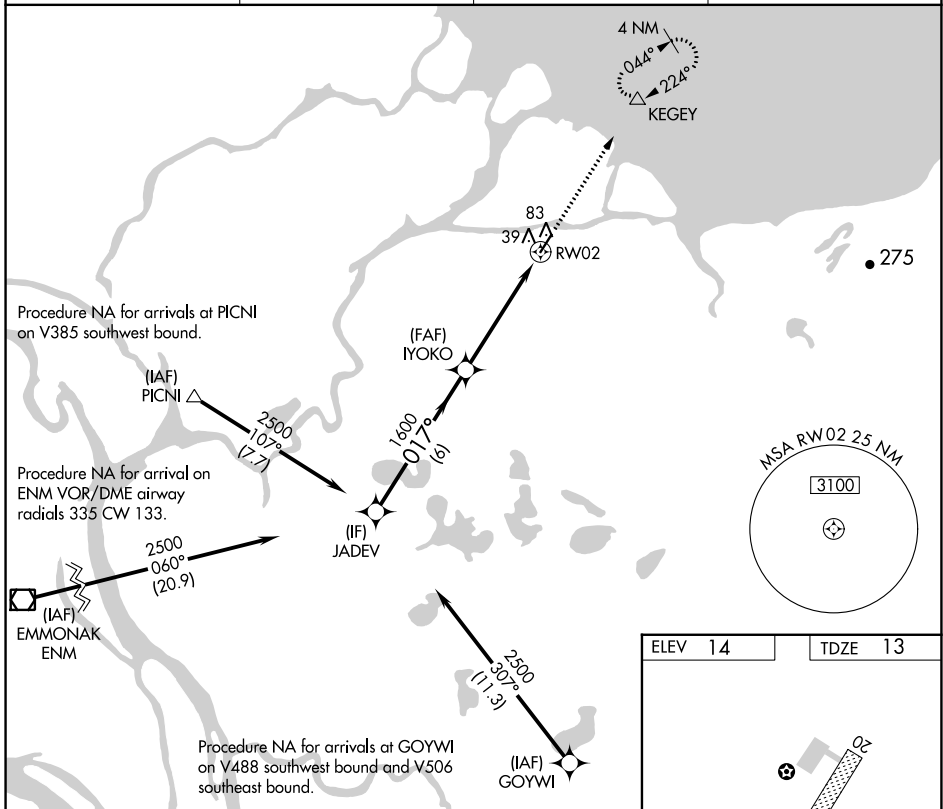


# RNAV (GPS) RWY 2

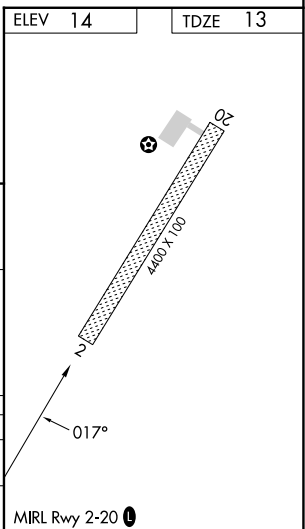
KOTLIK (2A9) (PFKO)

APP CRS <b>017°</b>	Rwy Idg TDZE Apt Elev	<b>4400</b> <b>13</b> <b>14</b>
------------------------	-----------------------------	---------------------------------------

RNP APCH.		MISSED APPROACH: Climb to 3500 direct KEGEY and hold.	
<p>▼ Circling Rwy 20 NA at night.</p> <p>▲ NA Rwy 2 helicopter visibility reduction below 3/4 SM NA.</p>			
AWOS-3P <b>118.1</b>	ENM/PAEM AWOS-3P <b>135.35</b>	ANCHORAGE CENTER <b>124.0</b>	CTAF <b>122.90</b>



	JADEV	IYOKO	3500	KEGEY
	2500	1600	↑	△
	017°		RWY 2	
	2.91°		TCH 40	
	6 NM		5 NM	
CATEGORY	A	B	C	D
RNAV MDA	500-1	487 (500-1)	NA	
CIRCLING	560-1	546 (600-1)	NA	



AK, 26 DEC 2024 to 20 FEB 2025

AK, 26 DEC 2024 to 20 FEB 2025