

RNAV (GPS) RWY 20

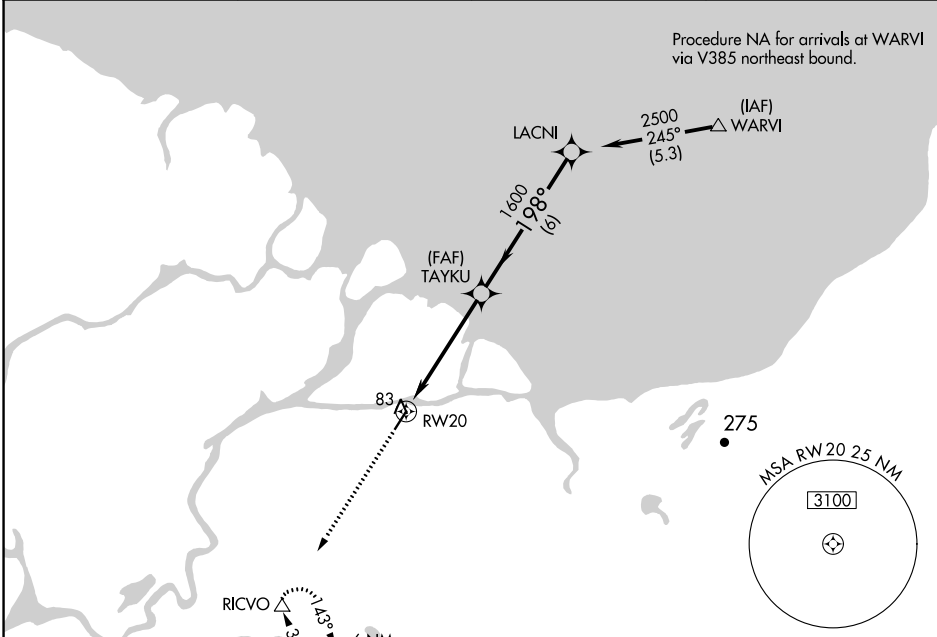
KOTLIK (2A9) (PFKO)

APP CRS 198°	Rwy Idg TDZE Apt Elev	4400 15 15
------------------------	-----------------------------	---------------------------------------

RNP APCH - GPS.
 ▼ When local altimeter not received use Emmonak altimeter setting. Procedure NA at night.
 ▲ NA

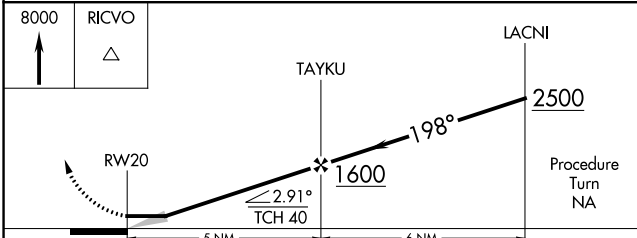
MISSED APPROACH: Climb to 8000 direct RICVO WP and hold.

AWOS-3P 118.1	ENM/PAEM AWOS-3P 135.35	ANCHORAGE CENTER 124.0	CTAF 122.90
-------------------------	-----------------------------------	----------------------------------	-----------------------



ELEV 15	TDZE 15
---------	---------

MIRL Rwy 2-20



CATEGORY	A	B	C	D
LNVA MDA	440-1	425 (500-1)		NA
CIRCLING	480-1	465 (500-1)		NA

AK, 26 DEC 2024 to 20 FEB 2025

AK, 26 DEC 2024 to 20 FEB 2025